



E-books, News & Videos App

Free Download!



SHIGA LAKE BIWA

Free

English

2017-2018

The 4th issue



Take a trip around Lake Biwa, the Mother Lake



Japan. Endless Discovery.



SHIGA Tourism Official Website
SHIGA · BIWAKO



MITSUI OUTLET PARK

SHIGA RYUO

Close to **KYOTO!**

離京都很近!

One of the Kansai region's largest!!

關西地方最大型!!

about

230
shops

For shopping, go to MITSUI OUTLET PARK!

購物的最佳選擇
三井OUTLET PARK!

Buy goods of famous brands at reasonable prices!

快來以超值的價格購入名牌精品吧!



COACH
COACH

POLO RALPH LAUREN
FACTORY STORE



AMERICAN EAGLE
OUTFITTERS

BARNEYS
NEW YORK
OUTLET

UNITED ARROWS LTD.

BEAMS
OUTLET

Francfranc
BAZAR

LE CREUSET

Felli Follie

adidas

new balance



and many more!!

By train and bus 乘坐電車 + 巴士的交通方法
Kansai International Airport 關西國際機場 → JR Yasu Sta. 野洲站 → MITSUI OUTLET PARK SHIGA RYUO 三井 OUTLET PARK 滋賀龍王

Kansai International Airport 關西國際機場 → JR Kyoto Sta. 京都站 (80 min. by train / 電車 約80分鐘) → JR Yasu Sta. 野洲站 (30 min. by train / 電車 約30分鐘) → MITSUI OUTLET PARK SHIGA RYUO 三井 OUTLET PARK 滋賀龍王 (30 min. by fixed-route bus / 路線巴士 約30分鐘)

By car 自駕車的交通方法
KYOTO 京都方面 → MITSUI OUTLET PARK SHIGA RYUO 三井 OUTLET PARK 滋賀龍王

KYOTO 京都南 IC → KYOTO MINAMI IC → KYOTO HIGASHI IC → RYUO IC → MITSUI OUTLET PARK SHIGA RYUO
Approx. 30 min. 約30分鐘
Approx. 500 m 約500公尺
*Time required for trip may vary depending on traffic conditions
※所需時間可能受道路狀況影響而不同

Easy access by direct bus! See the website for details including operating schedule.

直達巴士帶您輕鬆前往!
運行日等詳情請參閱網站。



By direct bus 乘坐直達巴士的交通方法
From Kyoto Station (booking required)
京都站前出發 (完全預約制)



Bus ticket booking and inquiries 巴士的預約、洽詢

Kintetsu Highway Bus Center 近鐵高速巴士中心

TEL. 06-6772-1631 Business hours 9:00-19:00

http://www.kintetsu-bus.co.jp/highway/routelist/route_detail.php?no=35

PRESENT!

Present this magazine at the main information counter on the 1st floor of the South Mall to receive a delightful gift.

至南商城 1F 綜合諮詢處出示本雜誌即可獲贈精美禮物。

Offer goods until: September 30, 2018
Offer redeemable at: main information counter, South Mall, 1F

兌換期間/至 2018 年 9 月 30 日止
兌換地點/南商城 1F 綜合諮詢處



*Images are for illustrative purposes only



MITSUI OUTLET PARK SHIGA RYUO

Business hours 營業時間

Shops 店鋪 10:00-20:00

Food court 美食區 10:30-21:00 (L.O. 20:30)

Restaurants 餐廳 11:00-21:00 (L.O. 20:30)

*Last order times and business hours vary by restaurant. ※最後點餐時間及部分店鋪的營業時間因店而異

Holidays None scheduled 休息日不定

〒520-2551 1178-694 Oaza Kuzushi Aza Sunayama, Ryuo-cho, Gamou-gun, Shiga TEL. 0748-58-5031
郵遞區號 520-2551 滋賀縣蒲生郡龍王町大字藥師字砂山 1178-694 電話號碼 0748-58-5031

Check the website for details!
詳情請查閱官網!

<http://www.31op.com/shiga/>

English site 英文網站
Chinese site 繁體中文網站

<http://www.31op.com/shiga/english/>
<http://www.31op.com/shiga/tw/>

Please note that the published data is based on information available as of September 2017 and is subject to change. 所刊載的內容為截止至 2017 年 9 月的信息。內容可能會有所變更，敬請見諒。



ENGLISH



繁體中文

三井不動産
&EARTH

SHIGA LAKE BIWA

www.goodlucktrip.jp

GOOD LUCK TRIP

[CONTENTS]

5 Inside Shiga

6 Shiga General Map & Access

9

Special Feature

Take a trip around Lake Biwa, the Mother Lake

10 The Japan Heritage of Shiga and Lake Biwa

12 Shiga activities

14 Art trip for adults

16 Flower calendar & spots

18 Events & festivals

19 Snow & hot springs

20 Gourmet guide

22 Shiga souvenirs & gifts

25 SHIGA TOPICS for Travelers

31

Area Feature

Where to go in Otsu City

Otsu's Mount Hiei / Sakamoto, Ogoto and Katata version

31 The flow of holy water that nourishes the foot of the mountain

34 Culture and techniques that bloomed in the water town

36 Recommendations from locals! The what's great about Otsu

38 Event Information

41

SHIGA MAPS

42 Otsu North / Central Part / South

44 Kusatsu Central Part / Lakeside & Karasuma

45 Koka Konan / Shigaraki / Aburahi

46 Hikone Central Part / Toyosato & Inae

47 Nagahama Central Part / Kinomoto / Maibara

48 Takashima Makino & Nagahama / Omiimazu / Shin-asahi & Takashima

50 Omihachiman North of Omihachiman Sta. / Around Hachiman-bori

52 Higashi-Omi Notogawa & Gokasho / Yokaichi

53 How to use the maps

*All of the information included in the GOOD LUCK TRIP series is published in accordance with the laws and regulations in effect in Japan.

*The prices listed in this magazine include tax.

*Information on this magazine is current as of August 2017.



Let me show you around Shiga!



Your guide
Tobita-kun

©久田工芸
©J.Kawamura

Data Symbols

Tel. No.	Address
Hours	Closed
Fee / Price	Date of Event
Accepted credit cards	
A = American Express	
D = Diners	
J = JCB	
M = MasterCard	
V = Visa	
銀 = UnionPay	
Access	URL
Parking	

STAFF

Publisher	Kazuo Shingu Tomoaki Kouno
Supervisor	Shoji Kawabata (Rainbow Publishing Co., Ltd.)
Directors	Takashi Ueki Naoki Katsumasa
Producer	Mariko Shimizu
Editors	Aritaka Kimura (Anchor Box) Chika Masatoshi
Art Director	Megumi Oida (View Planning)
Designers	Tomomi Yamazaki (View Planning) Ryoko Morioka (View Planning) Sayuri Ishii (View Planning) Matsuri Kawano (View Planning)
Maps	atelier PLAN Co., Ltd.
Translation	China Stage Co., Ltd.
Proofreading	Tokyo Shuppan Service Center
Advertising Sales	Kani Sha Takumi Iwatsuki
Printing	Miyagawa Printing Co., Ltd.
Special Thanks	Shiga Prefectural Government Biwako Visitors Bureau Mahorova Hisada Kogei

Published by Diamond-Big Co., Ltd.
2-9-1, Hatchobori, Chuo-ku, Tokyo,
104-0032, Japan
TEL: +81-3-3553-6696 (Editorial Section)
+81-3-3553-6660 (Advertising Section)
FAX: +81-3-3553-6725
Email: japan@arukikata.co.jp
www.goodlucktrip.jp

広告のお問い合わせ
(株)ダイヤモンド・ビッグ社
東京都中央区八丁堀 2-9-1 東八重洲ビル 6F
TEL: +03-3553-6660 FAX: 03-3553-6693
E-mail: japan@arukikata.co.jp

All rights reserved © Diamond-Big Co., Ltd.
Printed in Japan

Twin room

Hotel New Omi ホテルニューオウミ

Approx. 30 min. by train from Kyoto. Approx. 15 min. by car from Ryuo Interchange.

Premium hotel in front of Omihachiman Station, in a city rich in nature and history.

從京都搭乘電車約30分鐘。距龍王交流道約15分鐘車程。沈浸在豐富大自然與歷史風情中，近江八幡車站前的高級飯店。



USB outlet



Single room



Guest room

The concept is "satisfying sleep." A Simmons bed and your choice of three types of pillows invite you to a deep, refreshing slumber. 設計概念是「舒眠」。備有席夢思名床與3種枕頭，伴您一夜好眠。

USB outlet



Breakfast buffet

Savor the choicest flavors, selected with the concept of "eye-pleasing cuisine for health and beauty," in the breakfast area on the hotel's top floor.

在飯店頂樓的早餐會場，有秉持「彩食健美」概念的嚴選美食讓您大飽口福。

Teppan-yaki grilled Omi Beef

Feast on tender, juicy local Omi Beef while feasting your eyes on the view from the top floor.

在最頂樓一邊眺望無邊美景，一邊品嚐道地近江牛的豐富滋味。

Omihachiman sightseeing

Within a range of about 10 minutes by car, enjoy a range of tourist attractions such as Shimachi-dori, a rowboat ride in the riverside district, the Hachiman-bori canal, and the Azuchi Castle ruins.

新町通・悠遊水鄉・八幡堀・安土城址等，只需約10分鐘車程即可從早玩到晚。



Garden Lounge

Enjoy some relaxing downtime while gazing at the lush green Japanese garden. 在綠意盎然的日本庭園相伴下，度過悠閒自在的美好時光。

USB outlet

- Approx. 1 min, walk from JR Omihachiman Sta.
- Lobby and all guest rooms equipped with Wi-Fi
- Free parking area
- Approx. 1 min. walk to convenience store / approx 5 min. walk to AEON Omihachiman shopping center
- Various credit cards accepted
- Single: 16 m² / Twin: 24 m²

- 距JR近江八幡站步行約1分鐘
- 大廳與客房提供Wi-Fi服務
- 免費停車場
- 距便利商店步行約1分鐘 / 距AEON近江八幡店步行約5分鐘
- 可使用各種信用卡消費
- 單人房:16m² / 雙床雙人房:24m²

Inside Shiga

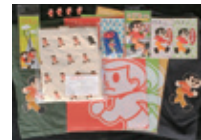
#1



#Tobita-kun

#Character #Traffic safety #Road hero

A boy wearing a red shirt and yellow pants with his hair parted to the side. Nicknamed Tobita-kun, he appears as signs set up on the sides of roads in various places, urging drivers to watch out for children rushing out into the street. He got his start at the beginning of the 1970s, which saw a rapid rise in automobile accidents. The sign-making company Hisada Kogei in Higashi-Omi City came up with the idea of making a sign in the shape of a boy to prevent accidents due to children running out in front of cars. Recently the number of Tobita-kuns handmade by residents' associations and regional organizations has increased, and there are many variations. When you visit Shiga, look for Tobita-kun in various forms and upload photos of him to social media!



Tobita-kun goods are sold at various locations in the prefecture, online, etc.



©久田工芸
®J. Kawamura

Shiga General Map & Access

How to go to Shiga from Osaka, Tokyo or Nagoya. It is common to take the JR Special Rapid Train from Osaka, to take the JR Tokaido Shinkansen and go first to Kyoto or Maibara from Tokyo, or to take the Tokaido Shinkansen or non-Shinkansen JR lines from Nagoya.

- *Data shown are as of July 2017.
- *Required times are estimated times.
- *For the Shinkansen fares, free-seat fares are shown.

Kansai WIDE Area Pass

Using the Kansai WIDE Area Pass, which is available for short-stay tourist visitors to Japan, you can ride JR trains as many times as you want in and around Kansai area for 5 days! Fare for adults is ¥9,000 and for children is ¥4,500. For more details, check out the JR West website!



www.westjr.co.jp/global/en/ticket/pass/kansai_wide/

守山
Moriyama

Kansai-Airport Express HARUKA
from Kansai-airport : 1 hr. 48 min.
¥4,180

JR Tokaido Main Line Special Rapid
from Kyoto : 25 min.
¥500

草津
Kusatsu

Kansai-Airport Express HARUKA
from Kansai-airport : 1 hr. 44 min.
¥4,180

JR Tokaido Main Line Special Rapid
from Kyoto : 21 min.
¥410

おごと温泉
Ogoto Onsen

JR Kosei Line Local Train
from Kyoto : 21 min.
¥320

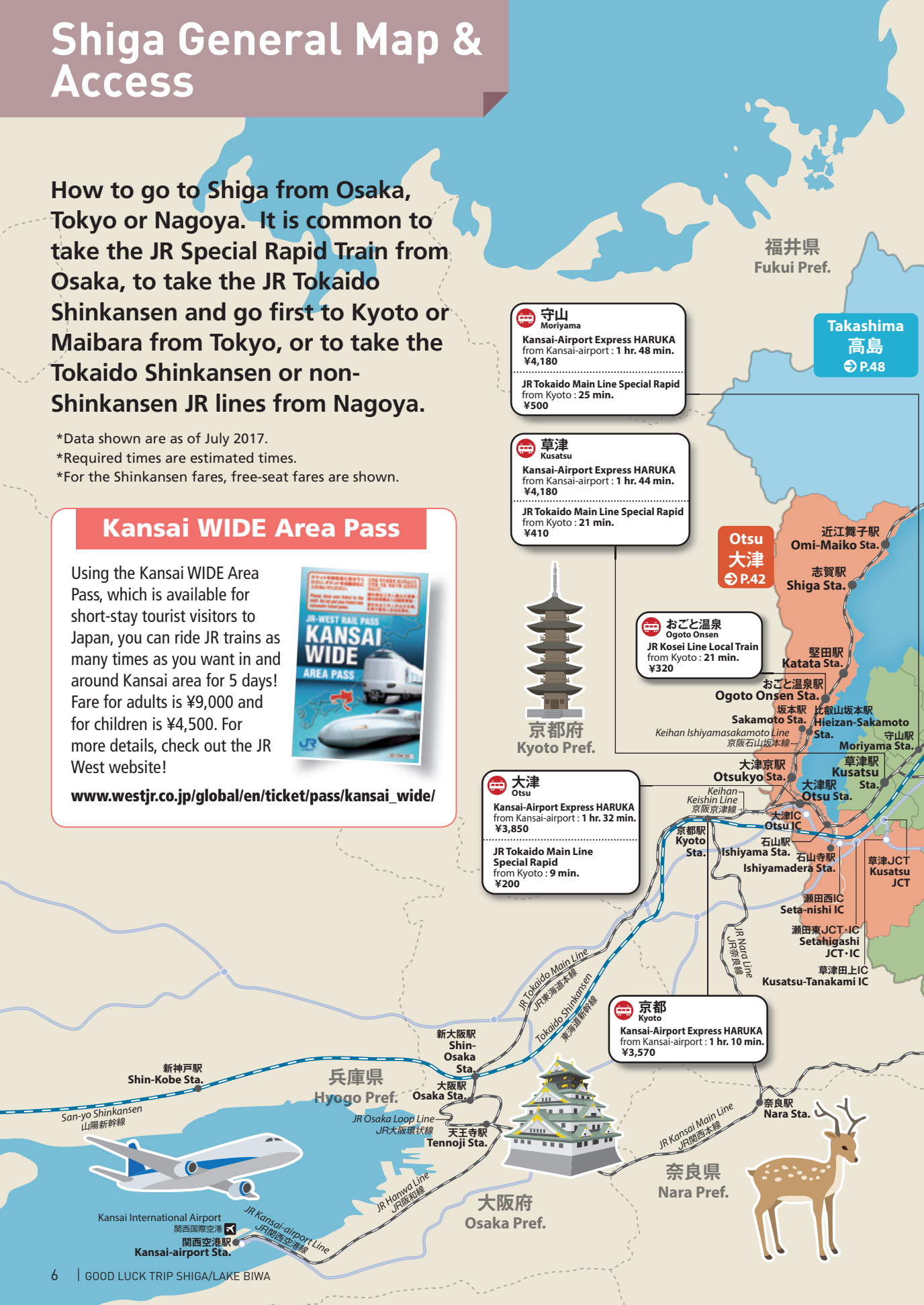
大津
Otsu

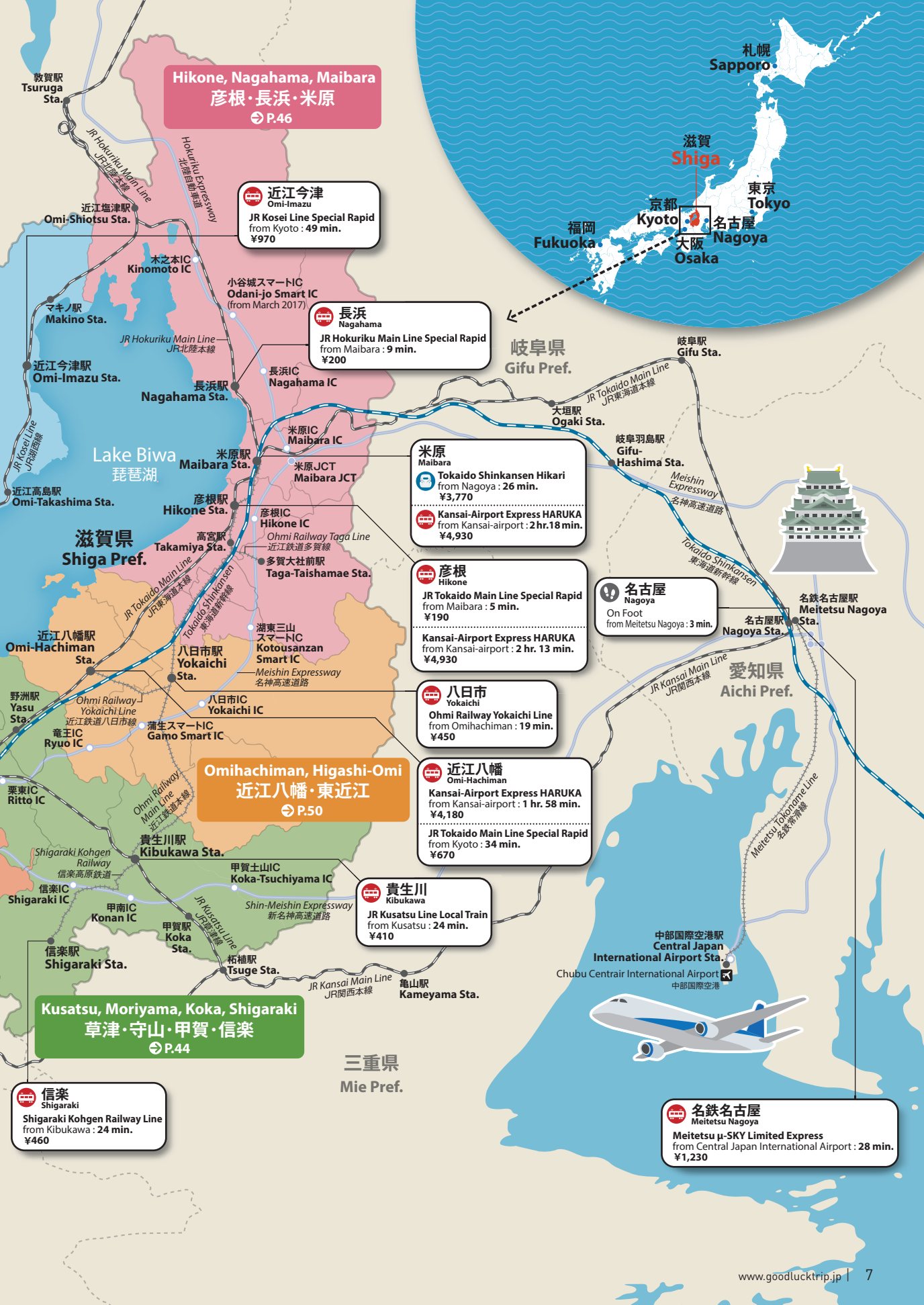
Kansai-Airport Express HARUKA
from Kansai-airport : 1 hr. 32 min.
¥3,850

JR Tokaido Main Line Special Rapid
from Kyoto : 9 min.
¥200

京都
Kyoto

Kansai-Airport Express HARUKA
from Kansai-airport : 1 hr. 10 min.
¥3,570





Hikone, Nagahama, Maibara
彦根・長浜・米原
⇨ P.46

近江今津
Omi-Imazu
JR Kosei Line Special Rapid
from Kyoto : 49 min.
¥970

長浜
Nagahama
JR Hokuriku Main Line Special Rapid
from Maibara : 9 min.
¥200

米原
Maibara
Tokaido Shinkansen Hikari
from Nagoya : 26 min.
¥3,770
Kansai-Airport Express HARUKA
from Kansai-airport : 2 hr.18 min.
¥4,930

彦根
Hikone
JR Tokaido Main Line Special Rapid
from Maibara : 5 min.
¥190
Kansai-Airport Express HARUKA
from Kansai-airport : 2 hr. 13 min.
¥4,930

八日市
Yokaichi
Ohmi Railway Yokaichi Line
from Omihachiman : 19 min.
¥450

近江八幡
Omi-Hachiman
Kansai-Airport Express HARUKA
from Kansai-airport : 1 hr. 58 min.
¥4,180
JR Tokaido Main Line Special Rapid
from Kyoto : 34 min.
¥670

貴生川
Kibukawa
JR Kusatsu Line Local Train
from Kusatsu : 24 min.
¥410

Kusatsu, Moriyama, Koka, Shigaraki
草津・守山・甲賀・信楽
⇨ P.44

信楽
Shigaraki
Shigaraki Kohgen Railway Line
from Kibukawa : 24 min.
¥460

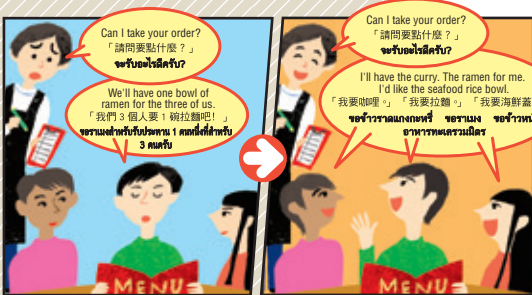
名鉄名古屋
Meitetsu Nagoya
Meitetsu μ-SKY Limited Express
from Central Japan International Airport : 28 min.
¥1,230

Learn Japanese manners to enjoy your trip more

學會日本人的禮儀 有個愉快的旅程 | มาเรียนรู้เรื่องมารยาทของญี่ปุ่นไว้สักนิดก็จะเที่ยวญี่ปุ่นได้สนุกมากขึ้น

In a restaurant

在餐廳裡 | ที่ร้านอาหาร



Order your food one serving at a time.

點菜時每人點一份 | การสั่งอาหารนั้น 1 ท่านจะสั่งอาหารสำหรับรับประทาน 1 คน

In a restaurant, ramen shop or sushi restaurant, it is the Japanese manner to order food individually. If an item on the menu says "from two servings," the dish can be shared. On the other hand, in a tavern or restaurant where customers are drinking alcohol, it is customary to order many different items and enjoy them with everybody at your table. Some of these restaurants apply a small seating charge and a small dish, "otoshi," is served with your drink.

在一般餐廳、拉麵店或是壽司店等餐飲店裡，點菜時日本人習慣每個人都會點一份餐。除非菜單上寫是「2人前」代表兩人的才會2個人一起吃一份。不過，在居酒屋等喝酒的地方就有一點不一樣，不一定每個人只點一種小菜，一般會點很多不同的食物跟朋友一起分享。有部分居酒屋會依人數給一些簡單的餐前小菜，費用會被算成每個人的座錢。

เมื่อท่านสั่งอาหารที่ร้านอาหาร, ร้านอาหาร, และร้านซูชิ ตามมารยาทของการสั่งอาหารในญี่ปุ่นแล้วก็คือ 1 ท่านจะสั่งอาหารสำหรับรับประทาน 1 คน เว้นแต่กรณีที่ในเมนูเขียนไว้ว่า สำหรับรับประทาน 2 คน ก็จะสามารแบ่งการรับประทานอาหารร่วมกันได้ และสำหรับบาร์หรือผับนั้นโดยทั่วไปแล้วจะมีการสั่งอาหารหลายอย่างมา แล้วร่วมรับประทานด้วยกัน แต่ไม่ได้หมายความว่า 1 ท่านจะต้องรับประทานอาหารสำหรับ 1 คนเสมอไป บาร์หรือผับบางแห่งอาจมีการเสิร์ฟอาหารเรียกน้ำย่อย ซึ่งเป็นเมนูที่นอกเหนือจากอาหารจานหลักเรียกว่า "โอะโทะชิ" ที่เสิร์ฟให้ตามจำนวนลูกค้าซึ่งถือเป็นค่าบริการโดยจะคิดค่าบริการเพิ่มจากค่าอาหาร

At a hotel buffet

飯店的自助餐 | ที่อาหารบุฟเฟต์ของโรงแรม



Only take as much as you can eat, and don't leave anything on your plate.

只拿自己能吃的份量，不要浪費食物 | รับประทานอาหารที่รับประทานได้หมด ไม่ทิ้งอาหารเหลือทิ้งในจานของตัวเอง

Many hotels serve buffet style breakfasts and dinners. At a buffet, take the foods you want to eat onto your plate and take a seat. Do not use your own chopsticks or silverware to pick up food from the buffet. Rather than piling a lot of food onto your plate at once, the Japanese style is to take a little bit at a time and go back to the buffet as many times as you like. It is considered bad manners to take more food than you can eat or to take extra food with you.

飯店裡的早餐和晚餐通常是自助餐的形式，客人可以拿著盤子自行選取食物，再回到座位上去進餐。取食物時不可以使用自己用過的筷子。日本人習慣每次只取少許的份量，然後放得美美的，寧可多走幾次也不會一次把盤子裝得太滿。拿太多食物到最後吃不完，或是把食物帶走都是不合禮儀的。

อาหารเช้าและอาหารเย็นของโรงแรมส่วนมากจะเป็นสไตล์บุฟเฟต์ ถ้าอาหารที่ใส่จานด้วยตนเองและตักกลับมารับประทานที่โต๊ะที่นั่งของตน การนำตะเกียบที่ตนเองใช้จับรับประทานอาหารแล้วนำอาหารของส่วนรวมนั้นถือเป็นการเสียมารยาท มารยาทในการดื่อกอาหารคือไม่ดื่อกอาหารปริมาณมากในคราวเดียว แต่ควรที่จะค่อยๆ รับประทานอาหารครั้ง การรับประทานอาหารเหลือและการนำอาหารเหลือถือกลับไปที่อื่นถือเป็นเรื่องผิดมารยาท

Getting into a public bath (hot springs)

公共浴池 (溫泉) 的入浴方法 | วิธีการเข้าบ่อน้ำที่สาธารณะ(ออนเซ็น)



Wash before entering.

使用浴池前先把身體洗乾淨 | ชำระร่างกายก่อนลงอ่างอาบน้ำ

Guests at a public bath enter the bath area in the nude. First, take off your clothes in the changing room, then wash your body thoroughly with soap at the faucet, rinse yourself off, and slowly step into the tub. Do not put your hand towel or bath towel in the water. The bathtub is a place where people relax leisurely and quietly. It's more Japanese to not speak in a loud voice.

使用公共浴池的規則是不可以穿衣服。首先，到更衣室把衣服脫下，再到水龍頭的前面用肥皂把身體洗乾淨，最後把腳慢慢放進浴池再把身體泡進去。不可以把毛巾或是浴巾放入浴池。還有，浴池是讓人在寧靜的環境下放鬆身體的地方，日本人習慣不會大聲講話。

ระเบียบการเข้าบ่อน้ำที่สาธารณะนั้น จะต้องถอดเสื้อผ้าก่อนการเข้าบ่อน้ำ ก่อนนี้ต้องถอดเสื้อผ้าที่ห้องเปลี่ยนเสื้อผ้า และชำระร่างกายด้วยสบู่ในบริเวณสำหรับชำระร่างกาย แล้วค่อยๆก้าวเท้าลงไปนั่งอ่างอาบน้ำ ห้ามนำผ้าเช็ดมือและผ้าเช็ดตัวลงไปนั่งอ่างอาบน้ำ อ่างอาบน้ำเป็นที่สำหรับบริการผ่อนคลายสรีระร่างกาย ดังนั้นจึงควรรักษามารยาทโดยไม่ส่งเสียงดังรบกวนผู้อื่น

Wait your turn

排隊等候 | รอคิว



When there is a line of people, go to the end and wait your turn.

有人在排隊的時候，到最末尾排隊按順序等候 | เมื่อมีคนยืนเข้าแถว จะต้องรอแถวท้ายสุดเพื่อรอคิวของเรา

The entrances to many facilities and ticket gates for buses and trains often have lines so that tickets can be checked. Japanese are said to love standing in line, and you might see many super-long lines of people waiting to get into a popular restaurant or shop. It is impolite to cut into the line or stand out of line. It is very Japanese to quietly stand in line calmly and wait your turn.

在設施的入口或是搭乘交通工具的關口，常常因為需要收票而排隊。特別是日本人一般被認為是很喜歡排隊的民族，受歡迎的餐廳、店舖常常會有很多人排在大排長龍。日本人非常厭惡插隊、不好好排隊的人，因為他們習慣安靜地排隊，耐心等待。

ในหน้าเข้าสถานที่ต่างๆและสถานที่สำหรับรอขึ้นยานพาหนะสาธารณะนั้นมักจะมีการรอเข้าแถวเพื่อรอตรวจตั๋วอยู่บ่อยๆ มีกฏที่ว่าคนญี่ปุ่นชอบการเข้าแถว สำหรับรับอาหารและร้านค้าต่างๆที่เป็นที่นิยมนั้นมักจะเห็นว่าจะมีการเข้าแถวรอ ยาวเหยียด ดังนั้นคนญี่ปุ่นจึงไม่ชอบการเข้าแทรกแถวและจะไม่ยอมแ่กแถวอย่างเบรียบๆ



JAPAN / SHIGA LAKE BIWA

Take a trip around Lake Biwa, the Mother Lake

Shiga recommendation!

The Japan Heritage of Shiga and Lake Biwa



Japan Heritage consists of stories of the culture and traditions of Japan that convey the historical charm and special characteristics of Japan's various regions. In Shiga Prefecture, "Lake Biwa and its Surrounding Waters: the Water Heritage of Prayers and Lifestyle" is recognized as Japan Heritage.



"Kabata," which is still being used as part of the kitchen of various homes.



高島 Takashima

Harie Shozu-no-Sato

金井 生水の郷

The Shin-asahicho, Harie district is where snow and rain that fall on the Hira Mountains well up as underground water. With an advance reservation, you can tour an old-fashioned ecosystem called "Kabata" that uses that pure water for daily living.

☎ 0740-25-6566

(Harie Shozu-no-Sato commission)

📍 372 Harie, Shin-asahi-cho, Takashima City

🕒 9:00-15:00 (Telephone reception) 🚫 None scheduled

👤 Tours: from ¥1,000 (A reservation must be made a day in advance.) 🚫 Credit cards not accepted.

🚶 Approx. 15 min. walk from JR Shin-Asahi Sta.

🌐 <http://harie-syozu.jp>

MAP P.49

高島 Takashima

Shirahige-jinja Shrine
白鬚神社

At this old shrine built some 2,000 years ago, there is a large, impressive torii (a gate standing at the entrance of a shrine) painted vermilion that stands in the waters of Lake Biwa. On clear days, Okishima Island, the largest island in Lake Biwa, can be seen beyond the torii. The main shrine is a national important cultural property.



☎ 0740-36-1555 📍 215 Ukawa, Takashima City

🕒 9:00-17:00 🚫 Open 365 days 🆓 Free admission

🚶 Approx. 30 min. walk from JR Omi-Takashima Sta. 🌐 <http://shirahigejinja.com>

MAP P.49

堅田 Katata

Ukimi-do Hall
浮御堂

This temple is well-known for "Katata-no-rakugan" (Flying geese at Katata), one of "the Eight Views of Omi," the subject of many paintings and songs in the Edo period. Ukimi-do Hall is famous for its beauty as it seems to float in the lake. There is a slab engraved with a Matsuo Basho haiku (Japanese fixed-form poetry) on the temple's grounds.

☎ 077-572-0455 MAP P.42, 44

📍 1-16-18 Honkatata, Otsu City

🕒 8:00-17:00 🚫 Open 365 days

👤 Admission: ¥300

🚫 Credit cards not accepted.

🚌 Ride a bus from JR Katata Sta. for approx. 5 min., get off at Demachi bus stop, and walk for approx.

7 min. (A bus service to Ukimi-do Hall is available on weekends.)



A major, 10-year project to renovate the main temple building, Komponchu-do Hall, began in 2016. Visitors are allowed inside the building.



坂本 Sakamoto

Hieizan Enryaku-ji Temple

比叡山延暦寺

This is the head temple of the Tendai sect of Buddhism, opened by Dengyo Daishi Saicho in 788. There is service that provides guidance using a multilingual voice guide pen (English, Chinese and Korean) available for a charge. The national treasure Komponchu-do Hall is being renovated, but it is possible to go inside it.

☎ 077-578-0001 📍 4220 Sakamoto-hommachi, Otsu City

🕒 8:30-16:30 (Saito and Yokawa 9:00-16:00) *Vary by season 🚫 Open 365 days

👤 Todo, Saito and Yokawa common pass: ¥700 (Adult), National treasure storage building admission ¥500 (Adult), Combo ticket ¥1,200 (Adult)

🚫 Credit cards not accepted. 🚶 Walk for approx. 10 min. from Keihan

Electric Railway Sakamoto Sta. → Sakamoto Cable Car Cable Sakamoto Sta.

→ Walk for approx. 8 min. from Cable Enryakuji Sta. 🌐 www.hieizan.or.jp

MAP P.42

An ascetic practice workshop at Enryaku-ji Temple



At Kajirin, the general ascetic practice hall in the Saito area of the temple grounds, you can purify your mind and body through such activities as copying the sutras and doing zazen. (There is a fee and a reservation is required.)



長浜 Chikubu Island
Nagahama **竹生島**

Chikubu Island, known as "the island where the gods live," has been an object of religious faith from time immemorial. In recent years it has been popular as a spiritual vortex and many people visit it to pray. You can access the island by boat from Nagahama Port, Hikone Port or Imazu Port on the lake's west side.

- ☎ 0749-65-6521 MAP P.47, 48
(Nagahama Tourist Association)
- 📍 Chikubu Island, Hayazaki-cho, Nagahama City
- 🎫 Island entry fee ¥400 (Boat fare separate)
- 💳 Credit cards not accepted.
- 🚤 By boat: Approx. 30 min. from Nagahama Port, 40 min. from Hikone Port, 25 min. from Imazu Port



長浜 Hogon-ji Temple
Nagahama **宝巖寺**

This is a temple located on Chikubu Island. Its principle image is Benzaiten, and it is recognized as one of the three greatest images of its kind in Japan. There are many sights to see including the Karamon Gate (national treasure), the Kannon-do Hall (important cultural property), and the Funaroka Corridor leading to Tsukubusuma-jinja Shrine. A popular practice is to write wishes on a slip of paper and place it inside a small daruma doll.

- ☎ 0749-63-4410 MAP P.47
- 📍 Hayazaki-cho, Nagahama City
- 🕒 Open 365 days (May vary depending on the operating state of boats) 🎫 Free admission (Island entry fee ¥400)
- 🚤 Approx. 30 min. by boat from Nagahama Port
- 🌐 www.chikubushima.jp/_origin



Hikone Castle, which has a tower designated a national treasure, is also worth seeing.



彦根 Genkyu-en
Hikone **玄宮園**

This former feudal lord's garden, which skillfully uses water from Lake Biwa for an artificial pond with a path running around it, is located to the northeast of Hikone-jo Castle. There is a tearoom on an artificial hill. There you can drink mild matcha (comes with Japanese sweets) for ¥500 while looking at the garden. The garden is illuminated at night in September and November.

- ☎ 0749-22-2742 MAP P.46
(Hikone-jo Castle Administration Office)
- 🕒 3-40 Konki-cho, Hikone City 🕒 8:30-17:00
- 🕒 Open 365 days 🎫 ¥200 (Admission for Genkyu-en only)
* Combo ticket including Hikone-jo Castle ¥600
- 💳 Credit cards not accepted.
- 🚶 Approx. 15 min. walk from JR Hikone Sta.
- 🌐 www.hikoneshi.com/castle/map

近江八幡
Omihachiman

The Omihachiman riverside district
近江八幡の水郷

MAP P.50, 51

You can take a pleasure boat round trip in the canal that stretches around Omihachiman and the natural reed bed that leads west to the lake like a maze. There are five landing places for pleasure boats that allow passengers to go around to beautiful riverside locations.

水郷のさと まるやま Suigo-no-Sato Maruyama

- ☎ 0748-32-2333 📍 1467-3 Maruyama-cho, Omihachiman City MAP P.50
- 🕒 3 boat services a day 10:00-, 13:00-, 15:00- (Schedule may vary) *The boat trip takes about one hour.
- 🕒 Operate every day (Regular boat service is available during Apr. and Nov.)
- 🎫 ¥2,160 (Adult) 📄 A,D,J,M,V
- 🚶 Ride a bus bound for Kokumin Kyuka-mura or Chomeiji from JR Omi-Hachiman Sta. for approx. 15 min., get off at Maruyama bus stop, and walk briefly
- 🌐 www.za.ztv.ne.jp/tekogi.maruyama



Shiga recommendation!

Shiga activities

In Shiga, which is blessed with abundant nature, there are many exciting activities available. While enjoying everything from water sports to the much-talked-about glamping, as well as fruit picking, you can have fun in the comfortable breeze.



Glamping

Canoeing



米原
Maibara

GLAMP ELEMENT
グランエレメント

MAP P.47

At this glamping facility, you can taste dishes prepared with local ingredients while enjoying a view of Mount Ibuki. There are 10 buildings with three types of guest rooms where you can enjoy the feeling of escaping from your workaday existence. These include tent types and domes with skylights. Only those staying in wood cabins may borrow a canoe to paddle around the lake in the center of the site.

- ☎ 0749-655-3755
- 📍 60-1 Ikeshita, Maibara City (in Green Park Santo)
- 🕒 8:30-17:30 (Reception)
- 📅 Open 365 days
- 🏠 Lodging: from ¥18,500 per person per night (all-inclusive)
- 🏠 A,D,I,M,V,銀
- 🕒 Approx. 15 min. by car from Hokuriku Expressway Nagahama Interchange or Maibara Interchange
- 🌐 www.glamp-element.jp

BIWA-ichi



米原
Maibara

BIWAICHI RENTAL CYCLING

びわこ一周レンタサイクル

In addition to holding events for enjoying bicycles, BIWAICHI RENTAL CYCLING offers BIWA-ichi, which allows you to tour around Lake Biwa. They rent out well-serviced bicycles, so even beginners can feel comfortable using.

- ☎ 090-3863-8453
- MAP P.47
- 📍 1F East exit inside JR Maibara Sta. (in front of the Ohmi Railway platform) 🕒 9:00-17:00 📅 Wed. *There are also some temporary closures. (Closed from mid-Dec. to mid-Feb.)
- 🚲 Two-day bicycle rental: from ¥5,500 for a hybrid bicycle and from ¥6,500 for a road bicycle 📅 Credit cards not accepted. 📍 Inside the JR Maibara Station building
- 🌐 <http://biwaichi-cycling.com>

南郷
Nango

Friendship Adventures
フレンドシップ
アドベンチャーズ

If you want to fully enjoy yourself in and on the water in Shiga, we recommend rafting on the Seta River. Going down the river while bouncing up and down in the rapids definitely is exciting.

- ☎ 077-533-5112
- MAP P.43
- 📍 1215-6 Ishiyama-nango-cho, Otsu City
- 🕒 9:00-11:30, 13:00-15:30 📅 Open every day (Apr. 1-Nov. 30)
- 🚣 Rafting: from ¥5,300 (Adult) 📅 Credit cards not accepted.
- 🕒 Approx. 15 min. by car from JR Ishiyama Sta., or ride a bus from JR Ishiyama Sta. for approx. 20 min., get off at Kaeruiwa bus stop, and walk briefly
- 🌐 www.friendship-adventures.com/index_eng



Rafting

Strawberry picking



近江
Omi-maiko

Omi-maiko Strawberry Farm
近江舞子いちご園

This is a tourism plantation where from early May to early June, you can pick delicious strawberries grown outdoors. Around October, you can also have fun digging up sweet potatoes and harvesting peanuts. ¥350 per plant. Reservations required.

- ☎ 090-1155-1515
- MAP P.42
- 📍 Minami-komatsu, Otsu City
- 🕒 9:00-16:00 (Reception: Until 15:00)
- 📅 Open every day during the period 🚰 Strawberry picking ¥1,500 per hour (Adult) 📅 Credit cards not accepted.
- 🕒 Approx. 5 min. walk from JR Omi-Maiko Sta.
- 🌐 www.roji15.com



Golf

瀬田
Seta

Seta Golf Course 瀬田ゴルフコース

This golf course has 54 holes spread out on gently sloping, hilly land that overlooks Lake Biwa and Mount Hiei. Enjoy exhilarating golf while fully enjoying nature on the highly tactical east and north courses designed by the master golf course designer Seiichi Inoue. The course has many restaurants and amenities for women.

- ☎ 077-544-1111
- 📍 12 Seta-hashimoto-cho, Otsu City
- 🕒 Open 365 days
- 💰 From ¥11,110
- 👤 A,D,J,M,V銀
- 🚗 Approx. 10 min. by car from JR Ishiyama Sta.
- 🌐 www.princehotels.com/en/golf/seta/

MAP P.43

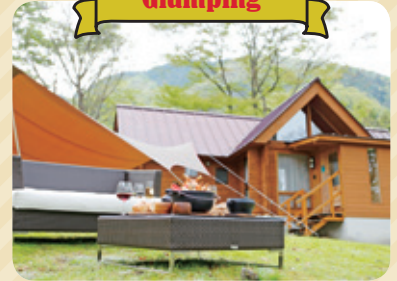


Enjoy Okubiwako

Resort activities

Enjoy luxury during your stay at this resort hotel for adults surrounded by the lake and mountains.

Glamping



Yakatabune Boat



近江
八幡
Omi-hachiman

Hachiman-bori Canal 八幡番堀

In the past, Omi merchants' boats went up and down this canal. The stonework and white plaster wall storehouses along it are known for being used to film period dramas. In addition to walking along the canal on foot, we recommend the pleasure boat tours.



- 📍 Miyauchi-cho, Omi-hachiman City
- 🕒 Ride a bus bound for Chomeiji from JR Omi-Hachiman Sta. for approx. 7 min., get off at Osugicho bus stop, and walk for approx. 3 min.

MAP P.50, 51

近江
舞子
Omi-maiko

Omimaiko Beach 近江舞子水泳場

Omimaiko Beach is a picturesque, 4 km beach with white sand and green pines. Every year it attracts large numbers of swimmers, including families, because of its beautiful water and scenery.

- ☎ 077-596-0520
- 📍 1095 Minami-komatsu, Otsu City
- 🕒 9:00-17:00
- 📅 Jul. 1-Aug. 31
- 🆓 Free admission (Parking fee ¥1,500)
- 💳 Credit cards not accepted.
- 🚗 Approx. 6 min. walk from JR Omi-Maiko Sta.
- 🌐 <http://oumi-maiko.info>

MAP P.42



Lake bathing

Michigan Cruise



浜大津
Hamaotsu

Michigan Cruise ミンガンクルーズ

The Michigan tours around the southern part of Lake Biwa allow you to enjoy dining, music, events and more. The panoramic view from the top floor Sky Deck is a must-see. You can also enjoy sailing between a certain section.

- ☎ 077-524-5000
- 📍 (Biwako Kisen Reservations Center 9:00-17:00)
- 📍 5-1-1 Hamaotsu, Otsu City (Otsu Port)
- 🕒 10:00-11:20, 11:40-13:00, 13:30-14:50, 15:10-16:30
- 🌙 Night cruise services available during summer season.
- 🕒 In operation every day
- 🚗 Michigan 80 (departing from Otsu Port): ¥2,780 (Adult), Section fare: from ¥720 (Adult) (Please contact for operation, operating period, etc.)
- 👤 A,D,J,M,V銀
- 🚗 Approx. 3 min. walk from Keihan Electric Railway Hamaotsu Sta.
- 🌐 www.biwakokisen.co.jp/en

MAP P.43

奥琵琶湖
Okubiwako

L'Hôtel du Lac ロテル・デュ・ラク

This small luxury hotel with fifteen rooms that stands on high ground with abundant greenery has a calm ambiance in harmony with the surrounding nature. You will be able to have some relaxing time to yourself without being bothered by anyone. It has plenty of amenities, including a pool, tennis courts and an open-air bath.

- ☎ 0749-89-1888
- 📍 2064 Oura, Nishiasai-cho, Nagahama City
- 🌙 Lodging: from ¥35,400 per person per night (including breakfast and dinner)
- 👤 A,D,J,M,V銀
- 🚗 Approx. 20 min. by car from Hokuriku Expressway Kinomoto Interchange
- 🌐 www.lhotel-du-lac.com/english

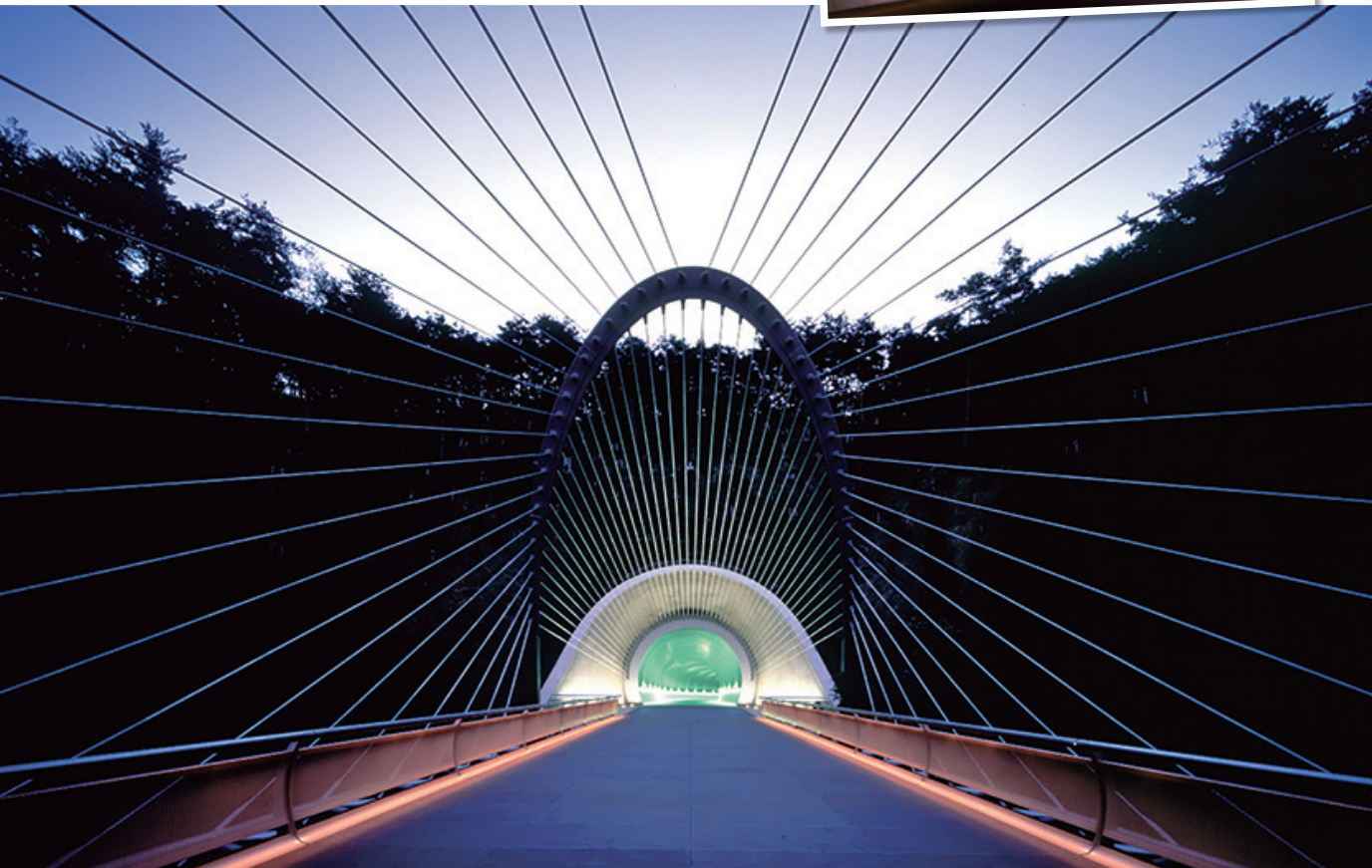
MAP P.48

Shiga recommendation!

Art trip for adults

Visit art museums that are among the most famous in Shiga and watch artisans carefully craft items by hand in Shiga. There are also places where you can take a workshop. Encounter high-quality works of art in Shiga.

In the spring, weeping cherry trees color the inner walls of the tunnel pink.



信楽

Shigaraki

MIHO MUSEUM

This is an art museum surrounded by the quiet mountains of Shigaraki. I. M. Pei, who is known for Le Grand Louvre, designed it with an "earthly paradise" motif. Inside, rare collections are on permanent display. They include Buddhist art and ancient art from around the world.

- ☎ 0748-82-3411
- 📍 300 Tashimomodani, Shigaraki-cho, Koka City
- 🕒 10:00-17:00 (Last admission: 16:00)
- 🗓 Mon. (if a public holiday, the following weekday will be closed instead) ¥1,100 (Adult)
- 🎫 A,M,V (accepted for purchasing admission tickets), A,D,J,M,V (accepted at a restaurant and a shop)
- 🚗 Approx. 20 min. by car from Shin-Meishin Expressway Shigaraki Interchange
- 🌐 <http://miho.jp>

MAP P.45



The entry hall has a glass ceiling with a geometric pattern.

This scenery also is art!

大津

Otsu

THE BIWAKO TERRACE

びわ湖テラス

At the Biwako Terrace, the grand panorama of the sky and the lake makes for a location that stirs up creative powers. This out-of-the-ordinary space includes a wide terrace with a water-feature shallow pool, a glass-walled cafe and a promenade where you can experience the four seasons. Enjoy the scenery that changes minute by minute with the weather. A cafe serves sweets and foods made with Shiga ingredients.

- ☎ 077-592-1155
- 📍 1547-1 Kido, Otsu City
- 🕒 9:30-17:00, Sat., Sun. & Hol.: From 9:00
- 🗓 Open 365 days (In the winter, only the indoor cafe is open.) *There are closure periods in Apr., Jun. & Dec.
- 🎫 Ropeway fare for round trip: ¥2,200 (Adult)
- 🚌 J,M,V Ride a bus bound for Biwako Valley from JR Shiga Sta. for approx. 10 min. Get off the bus and ride on a ropeway. It's a short walk from the upper Sta. to the site.
- 🌐 www.biwako-valley.com

MAP P.42





Japanese sweets making workshop



南郷
Nango

Kano Shojuan Sunai-no-Sato

叶匠壽庵 寿長生の郷

A Japanese sweets making workshop is held three times per week. Reservations are required. Participants make seasonal, high-grade fresh sweets. With the bento-included plan (¥6,480), which we recommend, you can have matcha green tea with Japanese sweets in an atmospheric tearoom.

- ☎ 077-546-3131 MAP P.42
- 📍 4-2-1 Oishiryumon, Otsu City
- 🕒 10:00-17:00,
10:45-12:15 (Japanese sweets making workshop)
- 📅 Wed. (Open every day in Mar. & Nov.), Japanese sweets making workshop: Closed on Mon., Wed., Fri., Sun. & Hol.
- 💰 Japanese sweets making workshop: ¥2,700 A,D,J,M,V
- 🕒 Approx. 30 min. by shuttle bus from JR Ishiyama Sta. north exit 🌐 www.sunainosato.com



甲賀
Koka

Koka Ninja House
(Koka-ryu Ninjutsu Yashiki)

甲賀流忍術屋敷 (甲賀望月氏本家旧邸)

You can visit the former residence of Koka Mochizuki, the head family of the Koka Gojusanke (Koka 53 ninja families). It has many ingenious mechanisms such as hidden doors and pitfalls to prevent attacks from enemies.

- ☎ 0748-86-2179 MAP P.45
- 📍 2331 Ryuboshi, Konan-cho, Koka City
- 🕒 9:00-17:00 (Last admission: 16:30)
- 📅 The end-of-year and New Year holidays
- 💰 ¥700 (Adult) Credit cards not accepted.
- 🕒 Approx. 5 min. by car from JR Konan Sta. 🌐 www.kouka-ninija.com/la_en



長浜
Nagahama

Kurokabe Glass Studio

黒壁ガラススタジオ

This is a combined workshop and shop filled with glass items handmade by artists. It has a full complement of original Kurokabe glass creations that cannot be purchased elsewhere. You can also watch glass-blowing.

- ☎ 0749-65-2330 (Main phone number) MAP P.47
- 📍 12-38 Motohama-cho, Nagahama City
- 🕒 10:00-18:00, Nov.-Mar.: 10:00-17:00
- 📅 The end-of-year and New Year holidays
- 💰 Glass accessories from ¥2,592, square flower vases from ¥2,160 A,D,J,M,V,銀
- 🕒 Approx. 5 min. walk from JR Nagahama Sta. 🌐 www.kurokabe.co.jp



Hachifuku painting workshop

信楽
Shigaraki

Shigaraki-togeimura

信楽陶芸村

Shigaraki raccoon dog is known as a ceramic statue which has eight special traits (hachifuku) that bring good fortune to people. The Hachifuku painting workshop takes about 60 minutes. For ¥1,080, you can make one figure and take it home with you the same day. Using eight lucky feng shui colors, you will make your own original raccoon dog.

- ☎ 0748-82-0522 MAP P.45
- 📍 1131 Nagano, Shigaraki-cho, Koka City 🕒 9:00-17:30
- 📅 The end-of-year and New Year holidays
- 💰 Hachifuku painting workshop: ¥1,080 Credit cards not accepted.
- 🕒 Approx. 10 min. walk from Shigaraki Kohgen Railway Shigaraki Sta. 🌐 http://tougeimura.jp



守山
Moriyama

Sagawa Art Museum

佐川美術館

This art museum has an impressive building that seems to float atop water. It has exhibition halls for Japanese paintings, sculpture and ceramics where you can take your time examining art. The museum also disseminates various art and culture through concerts, tea ceremony observation and the like.

- ☎ 077-585-7800 MAP P.44
- 📍 2891 Kitagawa, Mizuho-cho, Moriyama City
- 🕒 9:30-17:00 (Last admission: 16:30)
- 📅 Mon. (if a public holiday, the following day will be closed instead), the end-of-year and New Year holidays *There are also some temporary closures when exhibits are changed.
- 💰 ¥1,000 (Adult) Credit cards not accepted.
- 🕒 Approx. 15 min. by Kojak Bus (Biwako Ohashi Line) from JR Katata Sta. 🌐 www.sagawa-artmuseum.or.jp



Makie gold powdering workshop

彦根
Hikone

Inoue Butsudan

井上仏壇

The venerable shop Inoue Butsudan, which was established in 1901, offers workshops including gold leafing, lacquering and makie gold powdering. Its brand "chanto," under which coffee cups and more are made through a collaboration between skilled artisans and designers, is a must-see.

- ☎ 0749-22-1587 MAP P.46
- 📍 50 Serinakamachi, Hikone City
- 🕒 10:00-18:00 Tue. Gold lacquerwork workshop: from ¥1,300 (Reservation required) A,D,J,M,V
- 🕒 Approx. 8 min. walk from Ohmi Railway Hikone Serikawa Sta. or approx. 20 min. walk from JR Hikone Sta. 🌐 www.craft-workshop.jp

Flower calendar & spots

1 2 3 4 5 6



Early January to late February
Rape blossoms
(Daiichi Nagisa Park)



Late March to late April
Cherry blossoms
(Various places in the prefecture)

Late June to early September

Baikamo
(Jizo River)



In early May
Narcissus
(Biwako Valley)



Mid April to early May
Tulip
(Blume Hugel)



Mid June to early July
Hydrangea
(Chomei-ji Temple)



Late April to early May
Wisteria
(Sandai-jinja Shrine)

長浜 Nagahama Bonsai Exhibition of UME trees with blossoms
長浜盆梅展

Here, "bonsai" potted plant version of Japanese UME apricot trees at their most beautiful — including a tree nearly 3 meters tall and an old tree over 400 years old — is displayed in a tatami room in a pure Japanese style. The bonsai exhibition is well-known to Japanese people as a reminder that the new year has arrived.

Mid January to mid March **Plum blossoms**

☎ 0749-65-6521 (Nagahama Tourism Association) **MAP P.47**
 📍 2-5 Minato-cho, Nagahama City (Keiunkan) 🕒 9:00-17:00 📅 Jan. 10-Mar. 11 (2018)
 🗳 ¥500 🚫 Credit cards not accepted. 🚶 Approx. 3 min. walk from JR Nagahama Sta.



Best time to see Early to mid April **Cherry blossoms**

海津 Kaizu Kaizu-Osaki
海津大崎

Kaizu-Osaki was chosen among the top 100 cherry blossom viewing spots in Japan. Yoshino cherry trees over 80 years old continue for approx. 4 kilometers on the shore of Lake Biwa, creating a beautiful tunnel of cherry blossoms.



Best time to see Around April 10 **Cherry blossoms**

☎ 0740-33-7101 (Biwako Takashima Tourist Association) **MAP P.48**
 📍 Kaizu, Makino-cho, Takashima City
 🚌 Ride a bus from JR Makino Sta. for approx. 3 min., get off at Kaizu-Osaki-guchi bus stop, and walk for approx. 5 min.

大津 Otsu Lake Biwa Canal
琵琶湖疏水

Lake Biwa Canal carries water to Kyoto. There are about 200 cherry trees planted on each bank of the canal. This row of cherry trees that continues to Mii-dera Temple is famous as a cherry blossom viewing location. The sight of the blossoms reflected on the water's surface is something special. In early April the blossoms are illuminated at night, creating a fantastical scene.

☎ 077-528-2772 (Biwako Otsu Tourism Association) **MAP P.43**
 📍 Miidera-cho, Otsu City
 🚶 Approx. 5 min. walk from Keihan Electric Railway Miidera Sta.

醒井 Samegai Baikamo (Jizo River)
梅花藻 (地藏川)

Baikamo is a fresh water plant native to Japan that only grows where there is a clean, clear stream of water around 14 degrees C throughout the year. The Jizo River is one of the few places where it grows. It blooms with pretty, white flowers that resemble Japanese UME apricot.



Best time to see Late June to early September **Baikamo**

☎ 0749-58-2227 (Maibara Tourism Association) **MAP P.47**
 📍 Samegai, Maibara City 🚶 Approx. 5 min. walk from JR Samegai Sta.

Here is some information on the flowers of Shiga Prefecture that bloom from season to season. If you check the calendar to learn which flowers are in bloom where in each of the four seasons, it will be easy to make flower viewing plans for any time of year. Be sure to take photos of the beautiful sights you see.



7

8

9

10

11

12

Late August to early November

Dahlia

(Flower Village Hino Dahlia Garden)



Mid September to mid October

Kokia

(Hakodateyama Kokia Park)



Early November to early December

Autumn leaves

(Various places in the prefecture)



Early July to early August

Sunflower

(Daiichi Nagisa Park)

Early July to late August

Lily

(Biwako-Hakodateyama Lily Park)



愛荘

Ai-sho

Kongorin-ji Temple

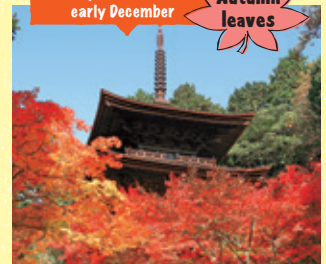
金剛輪寺

This is one of the Tendai sect's famed three temples of Eastern Biwa Lake. The leaves of mountain maples, Formosan sweetgum and other trees change color from early November to early December. The bright-red maple leaves next to the main hall called "chizome no momiji (bloodstained maple)" are a must-see.

Early November to early December



Autumn leaves



☎ 0749-37-3211 📍 874 Matsuoji, Aisho-cho, Echi-gun

MAP P.46, 52

🕒 8:30-17:00 🗓 Open 365 days 🎫 Admission: ¥600 💳 Credit cards not accepted.

🚗 Approx. 1 min. by car from Meishin Expressway Kotosanzan Smart Interchange 🌐 <http://kongorinji.jp>

近江今津

Biwako-Hakodateyama Lily Park

びわこ箱館山ゆり園



Lily

Best time to see
Early July to late August

This is a lily park open only in the summer on the Lake Biwa side of the Hakodateyama ski resort. Some 2.5 million lilies bloom beautifully there in 50 varieties, and if you ride up in the lift you can see them as though you were walking in mid air.

☎ 0740-22-2486

MAP P.48

📍 4201-4 Hiokimae, Imazu-cho, Takashima City 🕒 9:00-17:00

🗓 Open only during the summer. *Open every day during the period.

🎫 ¥1,850 (Adult, including the entrance fee & gondola ticket)

🚗 A,D,J,M,V 🗓 Ride a bus from JR Omi-Imazu Sta. for approx.

19 min., get off at Hakodateyama bus stop, and walk briefly

🌐 www.hakodateyama.com/green/



Autumn leaves

Best time to see
Late November to early December

Viewing **Metasequoias** is recommended in other seasons as well

Around May



New green leaves flutter in the refreshing wind of the plateau.

Around February



The tree-lined street is also beautiful in winter when it is covered in pure-white snow.



A magnificent approach road that continues to the Makino Highland

マキノ

Makino

Avenue of Metasequoias

メタセコイア並木

This avenue is lined with some 500 Metasequoia glyptostroboides, deciduous tall trees of the Cupressaceae family, spanning 2.4 km. Their leaves in the autumn are particularly beautiful, even when compared with the other impressive natural formations of Shiga Prefecture throughout the four seasons, and they draw many tourists.

☎ 0740-33-7101 (Biwako Takashima Tourist Association)

MAP P.48

📍 Between Hiruguchi and Makino, Makino-cho, Takashima City

🚗 Approx. 6 min. by bus from JR Makino Sta.

Shiga recommendation!

Events & festivals

Here we feature some events that let you experience the spirit of Japan, including a fireworks display that colors the night sky and Lake Biwa in mid-summer and the Nagahama Hikiyama Festival, which is registered as UNESCO Intangible Cultural Heritage.



大津
Otsu

Lake Biwa Great Fireworks Festival

びわ湖大花火大会

MAP P.43

This is one of the fireworks displays in Japan that bustles with around 350,000 people each year. About 10,000 fireworks are launched one after another from the water off Otsu Port, vividly coloring Lake Biwa and the night sky.

- ☎ 077-511-1530 (Lake Biwa Fireworks Festival Executive Committee)
- 📍 The banks of Lake Biwa around Otsu Port, Nagisa Park and other locations
- 🕒 19:30-20:30
- 📅 Aug. 7, 2018



大津
Otsu

Otsu Festival
大津祭

This is a luxurious and gorgeous festival that has been living up autumn in Otsu since the beginning of the Edo period. Thirteen festival floats parade around the streets of Otsu. In 2017 the main festival will be held on Oct. 8, and in 2018 on Oct. 7.

- ☎ 077-525-0505 (Otsu Festival Hikiyama Federation)
- 📍 Around Chuo-odori Street in front of JR Otsu Sta.
- 🕒 Oct. 7 & 8 (2017)
- 🕒 Approx. 5 min. walk from JR Otsu Sta.

MAP P.43



長浜
Nagahama

Nagahama Hikiyama Festival
長浜曳山まつり

This is one of the three biggest dashi (float) festivals in Japan, and it has been registered as UNESCO Intangible Cultural Heritage. Festival floats decked out in gorgeous ornaments including elaborate carvings and decorative fittings and curtains are a must-see. You can also look forward to children's kabuki performed on the floats.

- ☎ 0749-65-6521 (Nagahama Tourism Association) 📍 Around Nagahama City urban area
- 🕒 Apr. 9-17 each year (Children's kabuki: Apr. 13-16)
- 🕒 Approx. 10 min. walk from JR Nagahama Sta.

MAP P.47



多賀
Taga

Korei Taisai (Taga Festival)
古例大祭 (多賀まつり)

This is Taga-taisha Shrine's spring festival. It is also known as the "uma matsuri," or horse festival, because many horse riders take part. A total of 500 people in period costumes form a long line and march down the approach road to Taga-taisha Shrine.

- ☎ 0749-48-1101 (Taga-taisha Shrine)
- 📍 604 Taga, Taga-cho, Inukami-gun
- 🕒 8:30-17:00 🕒 Apr. 22 each year
- 🕒 Approx. 10 min. walk from Ohmi Railway Taga-Taishamae Sta.

MAP P.46

Shiga recommendation!

Snow & hot springs

Shiga Prefecture has many highlights in winter, too, including activities only possible in winter and beautiful spots for taking a photograph. Warm your chilled body at a well-known hot spring.



雄琴
Ogoto

Ogoto Hot Springs

おごと温泉

MAP P.42

- ☎ 077-578-3750
(Ogoto Onsen Kanko Park)
- 📍 Ogoto, Otsu City
- 🕒 Vary by facilities
- 🚗 Approx. 20 min. by car from Meishin Expressway Otsu Interchange/Approx. 20 min. walk from JR Ogotoonsen Sta.
- 🌐 www.ogotoonsen.com

This is a historic hot spring district established by Saicho, the founder of the Tendai sect of Buddhism, 1,200 years ago. Ogoto Hot Springs is located at the foot of a mountain, overlooking the spacious Lake Biwa. It is located near many cultural assets, including Hieizan Enryaku-ji Temple, a UNESCO World Heritage site. Many people use Ogoto Hot Springs as a base for sightseeing.



米原
Maibara

Okuibuki Ski Park

奥伊吹スキー場

This ski park has some of the largest ski slopes in the Kansai district which is blessed with light, fluffy powder snow. Rich variety born of nature make its courses attractive. Everyone from beginners to advanced skiers can enjoy themselves here.

- ☎ 0749-59-0322
- 📍 Okuibuki, Kozuhara, Maibara City
- 🕒 8:00-17:00
- 🕒 Open every day (Early Dec.-early Apr.)
- 🏠 A,D,J,M,V銀 (Only accepted for purchasing lift tickets)
- 🚗 Approx. 30 min. by car from Maibara Interchange or Nagahama Interchange
- 🌐 www.okuibuki.co.jp/green/winter.html

MAP P.47



長浜
Nagahama

Nagahama Taiko Hot Springs

長浜太閤温泉

This hot spring located amid picturesque scenery and commanding a view of Lake Biwa is characterized by its dark reddish brown spring water, which includes iron. Because Toyotomi Hideyoshi, who built a castle at Nagahama, fathered children for the first time there, this hot springs is known as the hot spring of having children.

- ☎ 0749-65-6521 (Nagahama Tourism Association)
- 📍 Around Nagahama Sta. (Nagahama City)
- 🕒 Vary by facilities (Hokoso, Hamakogetsu, Nagahama Royal Hotel)
- 🚗 Approx. 10 min. walk from JR Nagahama Sta.
- 🌐 <http://kitabiwako.jp>

MAP P.47



マキノ
Makino

Makino Sunny Beach

マキノサニービーチ

This beach is famous for its beautiful white sand and green pines. Its winter scenery makes it a popular photo spot in January and February. The blue of Lake Biwa, the white of the snow and the green of the pines contrast to create a magnificent scene.

- ☎ 0740-33-7101
- 📍 (Biwako Takashima Tourist Association)
- 📍 Nishihama and Chinai, Makino-cho, Takashima City
- 🕒 Approx. 10 min. walk from JR Makino Sta.

MAP P.48

Shiga recommendation!



Gourmet food guide

Here we highlight some famous food and sakes of Shiga Prefecture. Be sure to experience the flavors of ingredients only available in Shiga Prefecture, such as a fermented dish that has been loved throughout the ages, and Omi Beef, which melts in your mouth.



So tender that it melts in your mouth

近江牛のステーキ

Omi Beef steak

Omi Beef, which receives high praise as one of the three great Wagyu cattle breeds in Japan, could be called the pinnacle of Shiga gourmet foods. We recommend trying a meaty stake to enjoy the real pleasure of Omi Beef, the fine quality fat of which disappears in your mouth.



Shiga comfort food



鮎ずし

Crucian carp sushi

Crucian carp sushi, which has been around for more than 1,000 years in Shiga, is a preserved food made by pickling in salt crucian carp caught in Lake Biwa and then fermenting it along with rice. Because it is a fermented food that includes high-quality lactic-acid bacilli, it gets attention as a health food.



List of establishments

彦根 Hikone **A**
 Omi Beef Sennaritei Kyara
 近江肉せんなり亭 伽羅
 ☎ 0749-21-2789 **MAP P.46**
 2-1-7 Hommachi, Hikone City
 ☌ Lunch 11:30-14:30, Dinner 17:00-22:00 (L.O. 20:30) ☑ Tue.
 ☑ A,D,J,M,V ☑ Approx. 15 min. walk from JR Hikone Sta.
 🌐 <http://kyara.sennaritei.jp>

長浜 Nagahama **A**
 Yakiniku Marusa
 近江牛本家 焼肉まるさ
 ☎ 0749-68-2212 **MAP P.47**
 243 Hirakata-cho, Nagahama City
 ☌ 17:00-23:00, Sat., Sun. & Hol.: 16:30-23:00 ☑ Wed.
 ☑ A,D,J,M,V ☑ Approx. 20 min. walk from JR Nagahama Sta.
 🌐 www.ohmibeeff.com

長浜 Nagahama **A**
 Restaurant MORISHIMA
 近江牛 毛利志満
 ☎ 0749-62-6115 **MAP P.47**
 11-27 Motohamacho, Nagahama City
 ☌ 11:00-20:30 (L.O. 19:00)
 ☑ Wed.
 ☑ A,D,J,M,V
 ☑ Approx. 5 min. walk from JR Nagahama Sta.
 🌐 www.oumi-ushi.co.jp

堅田 Katata **A**
 DAIKICHI
 だいきち 堅田店
 ☎ 077-572-1129 **MAP P.42**
 2-25-11 Imakatata, Otsu City
 ☌ Lunch 11:00-14:00 (L.O. 13:30), Dinner 17:00-22:00 (L.O. 21:30)
 ☑ Wed. ☑ A,D,J,M,V,銀
 ☑ Approx. 10 min. walk from JR Katata Sta.
 🌐 <http://omibeef.com>

竜王 Ryuo **A**
 Okaki
 岡喜本店
 ☎ 0748-57-0568 **MAP P.50**
 5294 Yamanoue, Ryuo-cho, Gamo-gun
 ☌ Lunch 11:30-14:30, Dinner 17:30-21:00, Sat., Sun. & Hol.: Lunch 11:00-15:00, Dinner 17:00-21:30 ☑ Wed. ☑ A,D,J,M,V,銀
 ☑ Approx. 15 min. by car from Meishin Expressway Ryuo Interchange
 🌐 www.okakihonten.jp



A slightly bitter,
habit-forming flavor



鮎の佃煮

Ayu no tsukudani
(ayu preserves boiled in soy sauce)

Because they don't get very big, Lake Biwa ayu sweetfish are known as "ko-ayu" (small ayu). The standard dish made with ko-ayu, which have soft skin and bones and can be eaten whole including the head, is ayu no tsukudani. It's hard to stop eating it, either as a side dish with rice or with alcohol.



A treasure house of high-grade
sakes brimming with originality

近江の地酒

The local sakes of Omi



Because it has plenty of high-grade rice and pure water, a lot of sake has been made in Shiga for a long time. All the sakes diligently produced here and there in the prefecture are highly original. Enjoy profound flavor condensed by the climate and raw materials of Shiga.



Fine quality fat like
fatty tuna

ビワマスのお刺身

Biwa trout sashimi

Biwa trout is the subspecies native to Lake Biwa. The color of its meat is a vivid salmon pink, and when you eat it as sashimi, the fine-quality fat spreads softly in your mouth. The catches are small, but it is prized as a delicious fish.



近江
今津
Omiimazu

Nishitomo

西友本店

- ☎ 0120-39-2105 ☎ 2-1-20 Sumiyoshi, Imazu-cho, Takashima City MAP P.48
- 🕒 Lunch 11:00-15:00 (L.O. 14:20), Dinner 17:00-21:00 (L.O. 20:00)
- 📅 None scheduled (Jan. & Feb.: Closed on Mon.)
- 💳 J,M,V,銀 ☎ Approx. 8 min. walk from JR Omi-Imazu Sta.
- 🌐 www.nishitomo.co.jp



愛荘
Aisho

Fujii Honke

藤居本家

- ☎ 0749-42-2080 ☎ 793 Nagano, Aisho-cho, Echi-gun MAP P.46
- 🕒 9:00-18:00 📅 Open 365 days
- 💳 Credit cards not accepted.
- 🕒 Approx. 18 min. by car from Meishin Expressway Kotosanzan Interchange
- 🌐 www.fujiihonke.jp



彦根
Hikone

Ayu no Mise Kimura Hikone-Kyobashi

あゆの店 きむら 彦根京橋店

- ☎ 0749-24-1157 ☎ 2-1-5 Hommachi, Hikone City MAP P.46
- 🕒 9:30-18:00 (summer), 9:30-17:30 (winter) (Lunch 11:00-14:30) 📅 Tue.
- 💳 J,M,V
- 🕒 Approx. 15 min. walk from JR Hikone Sta.
- 🌐 www.ayukimura.co.jp



木之本
Kinomoto

Tomita Shuzo

富田酒造

- ☎ 0749-82-2013 ☎ 1107 Kinomoto, Kinomoto-cho, Nagahama City MAP P.47
- 🕒 9:00-18:00 📅 Tue.
- 💳 A,J,M,V
- 🕒 Approx. 5 min. walk from JR Kinomoto Sta.
- 🌐 http://7yari.co.jp



Shiga souvenirs & gifts

In Shiga, where traditional culture is handed down continually, there are many excellent, refined handicrafts. These various articles made individually by hand enrich their owners' daily lives.



Pearls designed by nature in Lake Biwa have charmingly unique colors and shapes. Prices mainly range between ¥10,000 and ¥30,000.

びわ湖の真珠 Lake Biwa pearls

大津絵 Otsu-e

Otsu-e are a kind of picture that originated in the Edo period depicting the daily lives of ordinary people. They contain satirical designs and vivid colors. Otsu-e products include dignified creations, as well as more casually priced items such as smart phone straps and picture postcards.



近江扇子 Omi fan

Various kinds of folding fans — including summer fans to cool you off and dancer's fans — start at ¥1,300 each. Some of them are rich in local color. These include Otsu-e fans and "the Eight Views of Omi" fans. The fan-painting workshop, which costs ¥2,000, also is popular.



びん細工手まり Binzaiku-temari

People are delighted by binzaiku-temari (a handicraft consisting of a bottle with an embroidered temari ball inside), because it is a talisman of family happiness. It is only sold at Louvres Echigawa (895-3 Ichi, Aisho-cho, Echi-gun), the community house at Echigawa Station.

List of establishments

大津 Otsu-e no Mise 大津絵の店

This shop is on the approach road to the very old Mii-dera Temple. In the store interior, with its impressive jet-black beams, about 2,000 Otsu-e are displayed and sold. They include Oni no Kannenbutsu (Ogres reciting Buddhist invocations in midwinter), which is depicted on wood from an old boat.

☎ 077-524-5656 ☑ 3-38 Miidera-cho, Otsu City MAP P.43
🕒 10:00-17:00 ☑ 1st & 3rd Sun. ☑ A,D,J,M,V
📍 Approx. 10 min. walk from Keihan Electric Railway Miidera Sta. 🌐 www.otsue.jp/english

大津 Otsu JINBO PEARLS 神保真珠商店

Jinbo Pearls is a shop that has been operating for more than 50 years. It sells Lake Biwa pearls that are grown over a long period of time, making the finished product charmingly unique. It is adjacent to a Japanese tea salon, so you can take a short rest and enjoy Shiga tea while shopping.

☎ 077-523-1254 ☑ 1F, 3-4-28 Chuo, Otsu City MAP P.43
🕒 10:00-18:00 ☑ Tue. & Hol. ☑ A,J,M,V,銀
📍 Approx. 10 min. walk from JR Otsu Sta. 🌐 http://jinbo-pearls.jp

愛荘 Aisho Echigawa Library and Bin Temari Museum 愛知川図書館・びんてまりの館

This is a museum that provides information on binzaiku-temari, an art form that has long been handed down in the Echigawa region. A binzaiku-temari consists of a vividly colored temari (ball from a traditional Japanese game) inside a round glass bottle. Their mysterious appearance is charming.

☎ 0749-42-4114 ☑ 1673 Ichi, Aisho-cho, Echi-gun MAP P.52
🕒 10:00-18:00
☑ Mon., Tue., Hol., last Wed. of each month, the end-of-year and New Year holidays, Oct. 2-10 (temporary closure) ☑ Credit cards not accepted. 📍 Approx. 8 min. walk from Ohmi Railway Echigawa Sta. 🌐 www.town.aisho.shiga.jp/lib/

安曇川 Adogawa Suita Sensu すいた扇子

This shop handles Takashima senkotsu (Takashima fan ribs), a traditional bamboo handiwork with 300 years of history. Takashima senkotsu are made in Adogawacho. They fit well in the hand and make a fan easy-to-use. Their spread-out-fan shape is good luck, making this a good Shiga gift.

☎ 0740-32-1345 ☑ 62 Nishiyurugi, Adogawa-cho, Takashima City MAP P.49
🕒 10:00-17:00 ☑ None scheduled ☑ Credit cards not accepted.
📍 Approx. 7 min. walk from JR Adogawa Sta.

近江の麻

Omi hemp



Because hemp fabric is well-suited to the high humidity climate around Lake Biwa, the east lake area has long been known as a hemp fabric producing district. One appealing point of items woven from carefully dyed hemp yarn is that they feel comfortable against the skin.



高島ちぢみ

Takashima chijimi

This is a thin cotton cloth with a texture of bumpy wrinkles on its surface. Its smooth feel on the skin and superior absorbency make it perfect for men's underwear and pajamas, t-shirts and other clothing for relaxing at home.

カフェグッズ (彦根仏壇)

Cafe goods (Hikone butsudan)

These items made using the techniques of butsudan (Buddhist altar) making are a new wave of the Shiga brand. Those techniques include the use of warm wood and vibrant lacquer coloring. Espresso cups go for ¥6,480 each.



信楽焼

Shigaraki ware



Throughout Shigaraki you can find unique raccoon dog ornaments.

Shigaraki ware is known for its raccoon dog ornaments. These ceramics made with high-quality clay and traditional techniques are distinguished by their warm hues.



能登川 Fabrica-Mura

ファブリカ村

This Higashi-Omi community spot shares the charm of hemp fabric. From fashion items to everyday goods, a plentiful hemp goods line-up is available. Also features a gallery and cafe.

☎ 0748-42-0380 📍 657 Sano-cho, Higashi-Omi City **MAP P.52**
 🕒 11:00-18:00 🗓 Mon.-Fri.
 🏷 Stole from ¥3,000 🚫 Credit cards not accepted.
 🕒 Approx. 12 min. walk from JR Notogawa Sta. 🌐 www.fabricamura.com

彦根 chanto

Hikone City has 350 years of history as a butsudan (Buddhist altar) producing area. "Chanto," which was opened by Inoue Butsudan, sells cafe goods that fuse traditional skills with design.

☎ 0749-22-1587 📍 50 Serinakamachi, Hikone City **MAP P.46**
 🕒 10:00-18:00 🗓 Tue. 📅 A,D,J,M,V
 🕒 Approx. 8 min. walk from Ohmi Railway Hikone Serikawa Sta. or approx. 20 min. walk from JR Hikone Sta. 🌐 www.chanto.org/en/top/index.html

高島 Takashima Marugoto Department Store

たかしま・まるごと百貨店

This store displays and sells specialties and handicrafts of Takashima such as cotton textiles and fermented foods that make use of the climate and natural features. Takashima City Tourism and Product Plaza, which contains a department store, also has attached facilities including a tourist information center and a cafe.

☎ 0740-33-7103 📍 1F, Takashima City Tourism and Product Plaza, 1-10-1 Asahi, **MAP P.49**
 Shin-asahi-cho, Takashima City 🕒 10:00-18:00 🗓 Tue., the end-of-year and New Year holidays
 📍 A,D,J,M,V 銀 🕒 Approx. 2 min. walk from JR Shin-Asahi Sta. 🌐 <http://takashima-marugoto.jp>

信楽 Ogama

Ogama, at the top of Rokurozaka hill, which is reached via Kamamoto Sansakuro promenade, is a gallery-cafe that can be found by looking for the large ascending kiln. There are many ceramic products suitable for gifts or souvenirs on the second floor.

☎ 0748-82-8066 📍 947 Nagano, Shigaraki-cho, Koka City **MAP P.45**
 🕒 11:00-17:00 🗓 Tue., Wed. & Thu. 📅 D,J,M,V
 🕒 Approx. 15 min. walk from Shigaraki Kohgen Railway Shigaraki Sta.
 🌐 www.meizan.info/ogama/

Shiga map



SHIGA Tourism Official Website
SHIGA・BIWAKO
<https://en.biwako-visitors.jp>

Tourist Information

大津 Otsu Station Tourist Information Center
大津駅観光案内所
 Otsu
 ☎ 077-522-3830 **MAP P.43**
 ☒ VIERRA Otsu, 1-3 Kasuga-cho, Otsu City ☎ 9:00-18:00
 ☑ The end-of-year and New Year holidays

信楽 Shigaraki Tourist Association
信楽町観光協会
 Shigaraki
 ☎ 0748-82-2345 **MAP P.45**
 ☒ 1142 Nagano, Shigaraki-cho, Koka City (in Traditional Crafts Center of Shigaraki)
 ☑ 9:00-17:00 ☑ Thu., the end-of-year and New Year holidays

近江八幡 Omihachiman Tourism Association
近江八幡観光物産協会
 Omihachiman
 ☎ 0748-32-7003 **MAP P.51**
 ☒ 9 Ishincho-moto, Omihachiman City
 ☑ 10:00-17:00
 ☑ The end-of-year and New Year holidays

彦根 Hikone City Information Desk
彦根市観光案内所
 Hikone
 ☎ 0749-22-2954 **MAP P.46**
 ☒ 40-7 Furusawa-cho, Hikone City (in JR Hikone Sta.)
 ☑ 9:00-17:30 (Goods are on sale until 17:00)
 ☑ The end-of-year holidays

長浜 Nagahama Station Tourist Information Office
長浜駅観光案内所
 Nagahama
 ☎ 0749-63-7055 **MAP P.47**
 ☒ 1-5 Kitafuna-cho, Nagahama City (in JR Nagahama Sta.) ☎ 9:15-16:45
 ☑ The end-of-year and New Year holidays

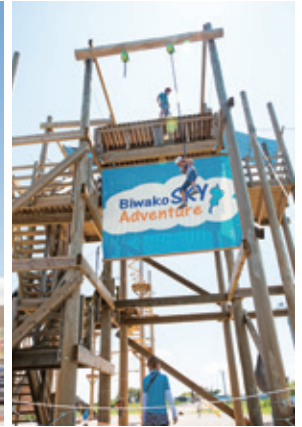
マキノ JR Makino Station Tourist Information Center
JRマキノ駅観光案内所
 Makino
 ☎ 0740-28-1188 **MAP P.48**
 ☒ 1209-8 Nishihama, Makino-cho, Takahama City ☎ 9:00-17:00
 ☑ The end-of-year and New Year holidays

SHIGA TOPICS

for Travelers

SHOPPING

MAP P.44



PIERI MORIYAMA – Enjoy a full day at a shopping mall facing Lake Biwa!

Pieri Moriyama is a large shopping mall that is easily accessible from the east end of the Biwako Ohashi Bridge. You can, of course, enjoy shopping at a variety of stores that offer everything from famous fashion brands to miscellaneous items and foods. You can also enjoy dining in the restaurants or on the food terrace while enjoying a view of Lake Biwa. Additionally, there are amusement facilities including an arcade and an athletic park, etc., ensuring a fun day for the whole family. There is also a one-stop tax free counter: ask for details at the information counter.

- ☎ 077-584-1000 📍 2620-5 Imahamacho, Moriyama City
- 🕒 10:00-21:00 (Restaurant Park 11:00-22:00)
- 🗓 Open 365 days 📺 A,D,J,M,V,銀
- 🚗 Approx. 15 min. by car from JR Katata Sta./Approx. 30 min. by car from Meishin Expressway Ritto Interchange
- 🌐 <http://pier1.sc>

GOURMET FOOD

MAP P.46

Dorayaki Kotetsu – Enjoy special “dorayaki” sweets to your heart's content right in front of Hikone Castle



A Japanese sweet shop that brings out the best in specially selected ingredients and uses no preservatives. Try the dorayaki — from the red bean paste to the raw cream and dough, the artisans make them one by one with confidence. You can also purchase Hiko-dora at the Hikone Castle Resort & Spa.

- ☎ 0749-26-3838 📍 1-2 Tachibanacho, Hikone City
- 🕒 9:30-17:30 🗓 Open 365 days 📺 Credit cards not accepted
- 🚗 Approx. 8 min. walk from JR Hikone Sta.
- 🌐 www.ichien.jp/kotetsu/

GOURMET FOOD

MAP P.44

Farmer's Market Ohminchi – Healthy food made with fresh local produce



From buffet restaurant to bento, its abundant menu items make full use of fresh produce. You can even enjoy Japanese food culture by making the bento fillings yourself. Additionally, handmade jams and Japanese sweets are on sale at the adjacent agricultural farmer's market. Perfect for souvenir shopping.

- ☎ 077-585-8318 📍 2785 Sumotocho, Moriyama City
- 🕒 Farmer's market 9:00-18:00, Buffet 11:00-15:00 (Reception until 13:40)
- 🗓 2nd Wed. (Open every day in Jan., May-Aug.), Dec. 31-Jan. 4 📺 J,M,V
- 🚗 Approx. 15 min. by car from JR Moriyama Sta. 🌐 www.ja-ohmifuji.or.jp/food/farmstand.php



Hankyu-Hanshin-Daiichi Hotel Group

HOTEL BOSTON PLAZA *Kusatsu Lake Biwa*



2F English Navigation
TOYOTA Rent a Car

TOYOTA Rent a Car

There is a Toyota Rent a Car on the 2F of parking lot of the hotel. This branch is "Kusatsu Station West exit store".



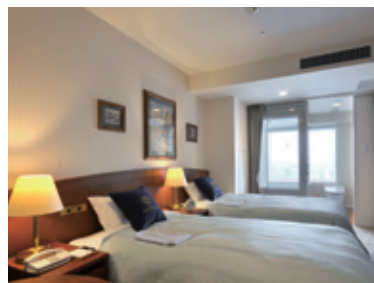
酒店2樓停車場有TOYOTA租車。這裡是草津站西口支店。호텔의 2층 주차장에 토요타 렌터카가 있습니다. 여기는 구사쓰역 니시구치 지점입니다.



Lobby
大廳
로비



Standard Twin (Guest Room / North Wing)
標準雙人房 (North Wing客房)
스탠다드 트윈 (North Wing 객실)



View Bath Twin (Guest Room / South Wing)
觀景盆浴雙人客房 (South Wing客房)
뷰 바스 트윈 (South Wing 객실)



View Bath Double (Guest Room / South Wing)
觀景盆浴大床客房 (South Wing客房)
뷰 바스 더블 (South Wing 객실)



Please make yourself at home, watching broadcast television in Chinese and English.

請一邊欣賞英文和中文的電視節目，度過一段愜意的時光。

영어와 중국어로 방송되는 텔레비전을 시청하면서 편한 시간을 보내십시오.

Wi-Fi service is available in all rooms
全部客房設有Wi-Fi
전 객실 Wi-Fi 도입



HOTEL BOSTON PLAZA
Kusatsu Lake Biwa

1-27 Nishiojicho, Kusatsu City, Shiga (in the Boston Square at the west exit of Kusatsu Station)
滋賀県草津市西大路町1-27 (草津駅西口ボストンスクエア内)

TEL:077-561-3311 FAX:077-561-3322

Great food!

美食也非常充實！ 맛집도 다양!

Ohmi Suehiro Honten, with its more than 100 years of operation, has been a popular restaurant since its founding as the originator of shabu shabu.

溯溯鍋元祖的近江牛末廣本店創業至今100多年，是自創業以來一直廣受喜愛的餐廳。

오우미 소고기 스테이크 본점, 창업한지 100여년, 사브사브의 원조로 창업 이래 인기 있는 레스토랑입니다.



Great access! 交通也非常方便！ 교통도 매우 편리!

20 minutes from Kyoto by JR Line.



Kansai International Airport ✈️	Riding the Limited Express Haruka, there's no transfer from KIX to Kusatsu Station			Kusatsu
	搭乘Haruka特快列車，從關西機場可以直達草津站 Haruka 특급열차로 간사이 공항에서 구사쓰역까지 논스톱			
	Limited Express Haruka [75min]	Kyoto	JR Biwako Line [20min]	
	Haruka特快列車(75分鐘) Haruka 특급열차(75분)		JR 琵琶湖線(20分鐘) JR 비와코선(20분)	

- From Kansai International Airport (KIX)
 - Approx. 100 min. by Limited Express Haruka from Kansai Airport Station to Kusatsu Station
- From other major cities
 - [From Kyoto] Approx. 20 min. from Kyoto Station to Kusatsu Station by Special Rapid Train of JR Biwako Line
 - [From Osaka] Approx. 50 min. from Osaka Station to Kusatsu Station by Special Rapid Train of JR Biwako Line
- 從關西機場
 - 搭乘Haruka特快列車，從關西機場到草津站約100分鐘
- 從其他主要城市
 - [從京都] 搭乘JR琵琶湖線新快速列車，從京都站到草津站約20分鐘
 - [從大阪] 搭乘JR琵琶湖線新快速列車，從大阪站到草津站約50分鐘
- 간사이 공항에서
 - 간사이 공항에서 구사쓰역까지 Haruka 특급열차로 약 100분
- 기타 주요 도시에서
 - [교토에서] 교토역에서 구사쓰역까지 JR 비와코선 신쾌속열차로 약 20분
 - [오사카에서] 오사카역에서 구사쓰역까지 JR 비와코선 신쾌속열차로 약 50분

map of Kusatsu Station and surrounding area

Kintetsu (Department Store)
1F Food section
2F Lady's fashion
3F-4F Men's&lady's fashion, Bookstore, others
5F Restaurants

Lty932
1F 阪急OASIS HANKYU OASIS (Supermarket)
9:30-22:00

Bicycle Rental
6:00-23:00
1-1-16, Shibukawa, Kusatsu-shi, Shiga
TEL / 077-565-9052
http://www.ekiren.com/EKIRIN/

EDION (Electronics Shop)
10:00-20:00

UNI QLO (Casual wear)
10:00-20:00

AL PLAZA (Department Store)
10:00-21:00

LAWSON (convenience store)
24HOURS

Kusatsu inn
Nationally designated historic sites Kusatsu inn honjin.
9:00-17:00 (Last entry 16:30)
Closed On Mondays

Don Quijote (Discount store)
You can enjoy shopping at a Tax-free shop until 5:00am of the next morning. It is approximately 900 yen by taxi.
10:00-5:00

5km to Lake Biwa

สวนดอกกลีบลี บิวาโกะฮาโกดาเตะยามะ

琵琶湖箱館山百合花园 Taman Bunga Bakung Biwako-Hakodateyama



สวนแห่งนี้มีดอกกลีบลีจำนวนถึง 2 ล้าน 5 แสนดอกบานสะพรั่งงดงามรอบทะเลสาบบิวะ
250万株の百合乐园, 将琵琶湖美景尽收眼底
Syurga 2.5 juta kuntum bunga bakung yang menghadap ke Tasik Biwa

ช่วงเวลาชมดอกกลีบลีคือเดือนกรกฎาคม - ต้นเดือนสิงหาคม
百合花期在7月~8月上旬 Bakung mekar dari bulan Julai hingga awal bulan Ogos



TEL:0740-22-2486 Address:4201 Hiokimaeaza Kawachi, Imazu-cho, Takashima City, Shiga www.hakodateyama.com/green/

ขอแนะนำที่พักสำหรับการท่องเที่ยวบิวาโกะฮาโกดาเตะยามะ ซึ่งท่านสามารถเพลิดเพลินกับการชมความงามของทะเลสาบได้อย่างอิมเมียมใจ
在琵琶湖箱館山百合花园的观光住宿, 推荐可饱览琵琶湖美景的饭店。 Hotel yang anda boleh nikmati Tasik Biwa adalah disyorkan untuk penginapan pelancongan Taman Bunga Bakung Biwako-Hakodateyama.



ห้องพักแคชชีให้บรรยากาศที่เงียบสงบผ่อนคลายของบ้านเรือนไม้
自在舒适的小木屋客房。
Bilik rumah log yang tenang.



รีสอร์ทโอเทิลริมทะเลสาบที่สะท้อนให้เห็นถึงภาพบรรยากาศของฤดูกาลทั้งสี่
映衬四季风情的湖畔渡假饭店。
Hotel pusat perangan tepi tasik yang mencerminkan rasa empat musim.

Grand Park Hotel OKUBIWAKO MAKINO

Address: 763-2 Nishihama, Makino-cho, Takashima City, Shiga

+81-740-28-1111
www.gphotels.jp

ACCESS It is about one hour from Osaka
and 30 minutes from Kyoto
to Omi-Imazu Station!

JR Tokaido Main Line Special Rapid Service
Bound for Tsuruga

JR Kosel Line
limited express

Taxi
10 min.

Taxi
15 min.

Kokoku Bus
Approx. 20 min.

Osaka Sta. 29 min.

Kyoto Sta. 32 min.

Omiimazu Sta.

Grand Park Hotel OKUBIWAKO MAKINO

Biwako Hakodateyama Lily park

Good access from
Kyoto Station!

Winter Resorts in Takashima City

Let us introduce four popular winter sports areas where kids can have fun, too!



Being located in an area of heavy snowfall, Takashima City is a flourishing area for winter sports such as skiing. Benefit from packages including accommodations and ski tickets offered by accommodation facilities in Takashima City! **MAP P.48-49**

With slopes located in front of the bus stop, this ski resort offers an excellent access.



1

KUNIZAKAI SNOW PARK 国境高原スノーパーク

- ☎ 0740-28-0303
- 📍 507 Noguchi, Makinocho, Takashima City
- 🚌 Ride a Kokoku bus from Makino Sta. on JR Kosei Line for approx. 31 min., get off at Kunizakai Ski-jo bus stop, and walk a few minutes
- 🌐 <http://snow.gnavi.co.jp/guide/htm/r0890ens.htm>
- ✉ contact@kunizakai.com

Also offering plenty of play equipment popular among children, this resort is suited for playing in the snow with the family.



2

Makino Highland Makino Skiing Ground マキノ/高原マキノスキー場

- ☎ 0740-27-0936
- 📍 931 Makino, Makinocho, Takashima City
- 🚌 Ride an Ohmi Railway bus from Makino Sta. on JR Kosei Line for approx. 18 min., get off at Makino Kogen Onsen Sarasa bus stop, and walk a few minutes
- 🌐 <http://makinokougen.co.jp/publics/index/7/>
- ✉ jimusyo@makinokougen.co.jp

Winter sports area reached by ropeway. Offers impressive panoramic views of Lake Biwa.



3

Hakodateyama Ski Resort 箱館山スキー場

- ☎ 0740-22-2486
- 📍 4201-4 Hiokimae, Imazucho, Takashima City
- 🚌 Ride a Kokoku bus from Omi-Imazu Sta. on JR Kosei Line for approx. 19 min., get off at Hakodateyama bus stop, and walk a few minutes
- 🌐 <http://snow.gnavi.co.jp/guide/htm/r0136ens.htm>
- ✉ h.info@hakodateyama.com

Family ski resort safe and secure for kids as well as novice skiers.



4

Kutsuki Snow Park

朽木スキー場

- ☎ 0740-38-2323
- 📍 180-1 Kutsukimiyamae, Takashima City
- 🚗 Approx. 25 min. by car from Adogawa Sta. on JR Kosei Line
- 🌐 <http://kutsuki-snowpark.com>
- ✉ info-ski@kutsuki-snowpark.com

Popular accommodation facilities offering packages including ski tickets

Make your trip more convenient and economical by using packages combining accommodations and tickets for the ski resort! What's more, shuttle buses to and from the resort are included, too!

Wi-Fi available in all hotels!



A Villa Sansui / Hanare Sansui

ヴィラ山水・はなれ山水

- ☎ 0740-20-5051
- 📍 761-1 Nishihama, Makinocho, Takashima City
- 🚶 Approx. 5 min. walk from Makino Sta. on JR Kosei Line (no pick-up and drop-off)
- 🌐 www.sansui-r.com/en
- ✉ villa@sansui-r.com

*No shuttle service to and from the ski resorts



B OKUBIWAKO MAKINO Grand Park Hotel

奥琵琶湖マキノ グランドパークホテル

- ☎ 0740-28-1111
- 📍 763-2 Nishihama, Makinocho, Takashima City
- 🚶 Nearest station for pick-up and drop-off: Makino Sta. on JR Kosei Line
- 🌐 www.gphotels.jp
- ✉ makino@gphotels.jp



C IMAZU SUN BRIDGE HOTEL

今津サンブリッジホテル

- ☎ 0740-22-6666
- 📍 1689-2 Imazu, Imazucho, Takashima City
- 🚶 Nearest station for pick-up and drop-off: Omi-Imazu Sta. on JR Kosei Line
- 🌐 www.sunbridge-hotel.co.jp/english/
- ✉ sun-info@sunbridge-hotel.co.jp



D Hotel Kaito

ホテル可也登

- ☎ 0740-22-5111
- 📍 1-6 Nakoji, Imazucho, Takashima City
- 🚶 Approx. 1 min. walk from Omi-Imazu Sta. on JR Kosei Line (no pick-up and drop-off)
- 🌐 www.kaitorou.com/kaito
- ✉ kaitorou.bekkan@galaxy.ocn.ne.jp

* Please use the local bus for transport to the ski resort.



E Acty-plaza Biwa

アクティプラザ 琵琶

- ☎ 0740-25-7111
- 📍 520 Nishigama, Fukamizo, Shinasahicho, Takashima City
- 🚶 Nearest station for pick-up and drop-off: Shin-Asahi Sta. on JR Kosei Line
- 🌐 www.acty-plaza.jp
- ✉ apb@acty-plaza.jp



F Government Registered Inn Shirahamaso Inn

政府登録旅館 白浜荘

- ☎ 0740-32-0451
- 📍 Omi Shirahama, Adogawacho, Takashima City
- 🚶 Nearest station for pick-up and drop-off: Omi-Takashima Sta. on JR Kosei Line
- 🌐 www.shirahamaso.co.jp/en/
- ✉ tame-m@shirahamaso.co.jp

Useful Japanese Expression

實用日語會話 | ส่วนวนภาษาญี่ปุ่นที่นำมาใช้ได้จริง

Everyday conversation / greetings

日常會話 | สนทนาในชีวิตประจำวัน

hai / iie はい いいえ	Yes / No 是 / 不是	はい / いいえ
konnichiwa こんにちは	Hello. 您好 (午安)	สวัสดี
sayōnara さようなら	Good-bye. 再見	ลาถ่อน
arigatō gozaimasu ありがとう ございます	Thank you. 謝謝	ขอบคุณ

sumimasen すみません	Excuse me. 不好意思	ขอโทษ
gomennasai ごめんないさい	I'm sorry. 对不起	ขอโทษ
oishidesu おいしいです	It's delicious. 好吃	อร่อย

Useful expression

實用會話 | ส่วนวนควรรู้

~ni ikitai desu ~に 行きたい です	I would like to go to ---. 我想去……。	อยากไปที่ ~
~wa arimasuka? ~は ありますか	Do you have ---? 有……嗎?	มี ~ ไหม?
~o kudasai ~を ください	Please give me ---. 請給我 -	ขอ ~
~wa dokode kaemasuka? ~は どこで 買えますか	Where can I buy ---? 在哪裡可以買得到……?	จะหาซื้อ ~ ได้ที่ไหน?
ikura desuka? いくら ですか	How much is it? 多少錢?	ราคาเท่าไร?
dorega osusume desuka? どれが おすすめ ですか	Which do you recommend? 您推薦哪一個?	คุณแนะนำอันไหน?
kore wa nandesuka? これ は 何ですか	What is this? 這是什麼?	นี่คืออะไร?
itsu shuppatsu desuka? いつ 出発 ですか	When is the departure? 什麼時候出發?	ออกเดินทางเมื่อไหร่?
itsu touchaku shimasuka? いつ 到着 しますか	When is the arrival? 什麼時候到達?	ถึงที่หมายเมื่อไหร่?
~wa dokodesuka? ~は どこですか	Where is ---? ~ 在哪裡?	~ อยู่ที่ไหน?
jikan wa donokurai kakarimasuka? 時間 は どのくらい かかりますか	How long does it take? 需要多少時間?	ใช้เวลาประมาณเท่าไร?
shashin o totte kudasai 写真 を 撮って ください	Please take a photograph. 請幫我拍照。	ช่วยถ่ายรูปให้หน่อยได้ไหม
toire o kashite kudasai トイレ を 貸して ください	May I use your restroom? 我想借用洗手間。	ขอใช้ห้องน้ำหน่อย

Useful words

實用單字 | คำศัพท์ควรรู้

kūkō 空港	airport 機場	สนามบิน
ei tiem ATM	ATM (automatic teller machine) ATM	เอทีเอ็ม
basu noriba バス乗り場	bus stop 公車站	ป้ายรถเมล์
chikatetsu 地下鉄	subway 地下鐵	รถไฟใต้ดิน
kippu uriba 切符売り場	ticket counter 售票處	เคาน์เตอร์จำหน่ายตั๋ว
konbini コンビニ	convenience store 便利商店	ร้านสะดวกซื้อ
toire トイレ	restroom 洗手間	ห้องน้ำ
byōin 病院	hospital 醫院	โรงพยาบาล
kōban 交番	police box 警察局	ป้อมตำรวจ
kankō annaijo 観光案内所	tourist information desk 旅遊諮詢服務中心	ศูนย์แนะนำข้อมูลการท่องเที่ยว
eki 駅	station 車站	สถานี
kyō 今日	today 今天	วันนี้
ashita 明日	tomorrow 明天	พรุ่งนี้

Troubles

發生問題 | ปัญหา

guai ga warui desu 具合 が 悪い です	I don't feel well. 我覺得很不舒服。 รู้สึกไม่สบาย	~o nakushi mashita ~を なくし ました	I lost my ---. 我的……不見了。 ทำ ~ หายไป
keisatsu(kyūkyūsha) o yonde kudasai 警察 (救急車) を 呼んで ください	Call the police/an ambulance. 請叫警察 (救護車)。 กรุณาเรียกตำรวจ (รถพยาบาล)ให้หน่อย	nihongo ga wakarimasen 日本語 が 分かりません	I don't understand Japanese. 我不會日語。 ไม่เข้าใจภาษาญี่ปุ่น

Shopping & Restaurant

購物&餐廳 | ซื้อปิ้ง และร้านอาหาร

motto ōkii (chiisai) saizu wa arimasuka? もっと 大きい (小さい) サイズ は ありますか	Do you have a larger/smaller size? 有再大一點 (小一點) 的尺吋嗎? มีไซส์ใหญ่ (เล็ก) กว่านี้ไหม?	shichaku shitemo iidesuka? 試着 しても いいですか	May I try this on? 可以試穿嗎? ลองได้ไหม?
chigau iro (dezain) wa arimasuka? 違う 色 (デザイン) は ありますか	Do you have a different color/design for this? 有其他的顏色 (款式) 嗎? มีสี (ดีไซน์) อื่นไหม?	kādo de shiharai dekimasuka? カード で 支払い できますか	May I pay with a credit card? 可以使用信用卡嗎? ชำระเงินด้วยบัตรเครดิตได้ไหม?
betsubetsu ni tsutsunde kudasai 別々 に 包んで ください	Please wrap them separately. 請幫我分開包裝。 กรุณาห่อแยกกัน	tabekata o oshiete kudasai 食べ方 を 教えて ください	Please tell me how to eat it. 請教我吃法。 กรุณาสอนวิธีทานหน่อย
chugokugo (taigo/eigo) wa hanasemasuka? 中国語 (タイ語 / 英語) は 話せますか	Do you speak Chinese/Thai/English? 會說中文 (泰語 / 英語) 嗎? พูดภาษาจีน(ภาษาไทย / ภาษาอังกฤษ)ได้หรือไม่?		

WHERE TO GO in OTSU CITY

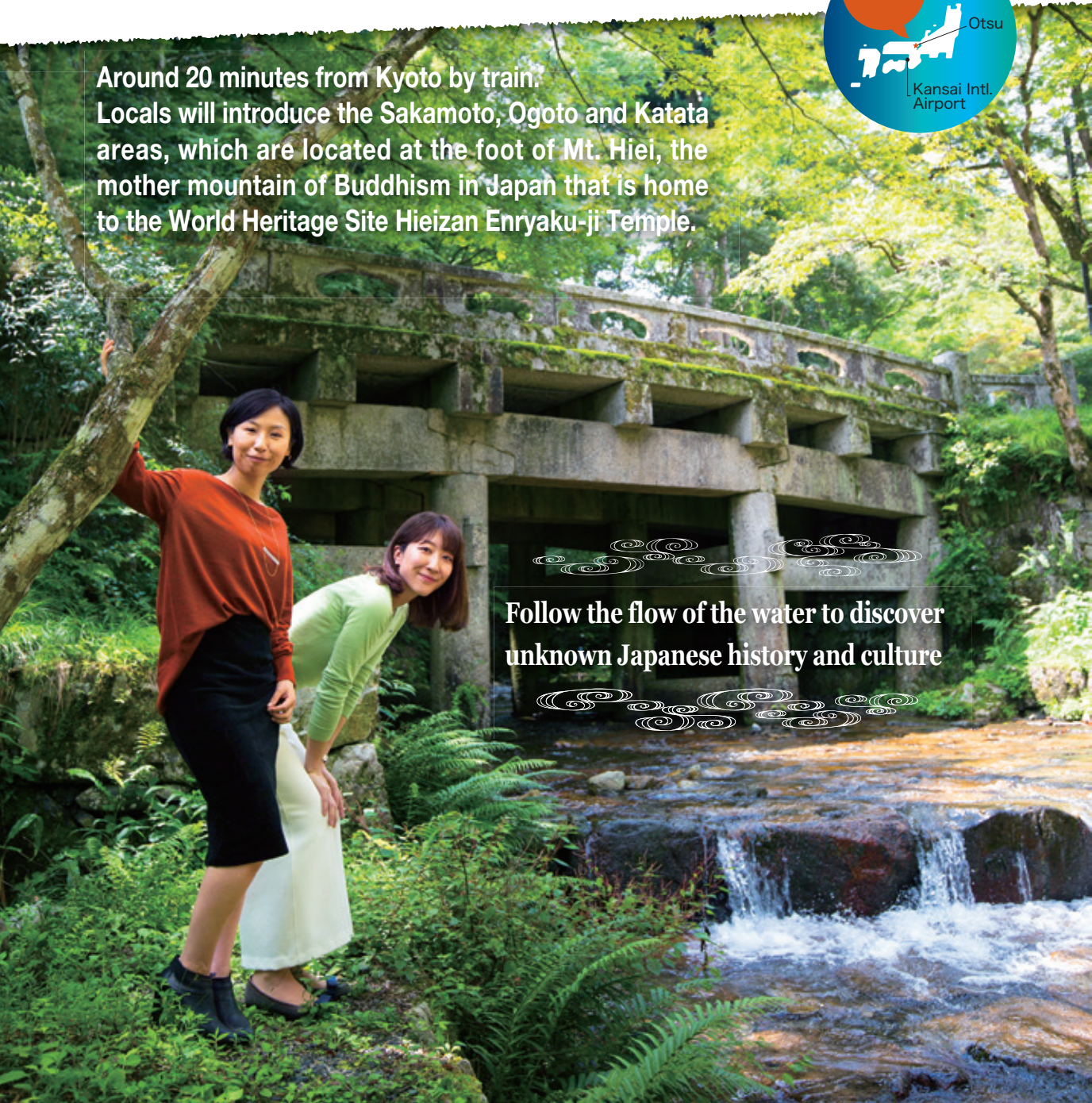

Otsu's Mount Hiei/
Sakamoto, Ogoto and Katata version MAP P.42



Around 20 minutes from Kyoto by train.
Locals will introduce the Sakamoto, Ogoto and Katata areas, which are located at the foot of Mt. Hiei, the mother mountain of Buddhism in Japan that is home to the World Heritage Site Hieizan Enryaku-ji Temple.



Follow the flow of the water to discover
unknown Japanese history and culture



The flow of holy water that nourishes the foot of the mountain

~The story of the town strongly linked with water~

Hieizan Enryaku-ji Temple is a World Heritage listed temple that is one of the most important holy places for Buddhism in Japan. Beneath the temple is one of the world's few ancient lakes, which is also Japan's biggest, Lake Biwa. The water from Mt. Hiei's mountain streams nourish the rice paddies at the foot of the mountain, and reverence of this divine natural wonder in ancient times led to an increase in the importance of mountains and water in the Japanese religious perspective. Mt. Hiei and Lake Biwa are known as two major holy sites linked by the flow of water. From the ornate tourist spots of Kyoto, take a short trip to an area where prayers for mountains and water are realized. Why not take a break from the noise of the city and enjoy a simple trip to the depths of Otsu?



比叡山・坂本周辺

Around Mt. Hiei and Sakamoto

Sakamoto, the city where the water that springs from Mt. Hiei flows first. The closest town to the holy ground, it developed as an entrance town supporting the mountain.



Townscape of Sakamoto 坂本のまちなみ

As the entrance town to Hieizan Enryaku-ji Temple, Sakamoto appears quiet. Water from the Omiya River travels around the town via waterways, and flows into gardens in the retreats of retired priests, before moving onto the next holy garden. A national preserved area of important traditional buildings, the moss covered stonework is also beautiful.

- ☎ 077-578-6565 (Sakamoto Tourist Association)
- 📍 Sakamoto, Otsu City
- 🌐 <http://www.hieizansakamoto.jp/>



Mt. Hiei's Benkei-sui 比叡山の弁慶水

There are over 20 natural spring spots in Mt. Hiei, and the water is valued highly as holy water that works wonders. One of the waters is known as Benkei-sui, and the hut covering the natural spring stands quietly, surrounded by old cedar trees on the slope connecting the Todo area and the Saito area.

- ☎ 077-578-0001 (Enryaku-ji Temple, main phone number)
- 📍 Sakamoto Honmachi, Otsu City (Mountain path between the east and west pagoda districts)
- 🌐 <http://www.hieizan.or.jp/>

Hiyoshi-taisha Shrine's Higashi Hongu and Sanbashi 日吉大社の東本宮・三橋

Hiyoshi-taisha Shrine covers a vast area of around 430,000m². Water from Mt. Hiei flows through the precinct in the form of the Omiya River, and there are three stone bridges that cross it. There is also an open drain on the grounds, where spring water from the foot of the mountain behind the main hall of the Higashi Hongu Shrine joins water from the Omiya River.



A stone bridge over the Omiya River on the shrine grounds

- ☎ 077-578-0009
- 📍 5-1-1 Sakamoto, Otsu City
- 🕒 9:00-16:30
- 🕒 Open 365 days
- 💰 ¥300 (Adult)/¥150 (Child)
- 💳 Credit cards not accepted. 🌐 <http://hiyoshitaisha.jp/>



雄琴周辺 Around Ogoto

Ogi, where the blessed water from Mt. Hiei nourishes the rice terraces, and Ogoto, which expands underneath. The scenery and hot water of this city have healed people's bodies and minds for ages.



Ogoto Hot Springs おごとと温泉

A 1200 year old hot springs town started by Saichou, the founder of Hieizan Enryaku-ji Temple. It is said that back then, there was a small pond called Nenbutsu Pond, and the water from this pond became the healing water of Ogoto Hot Springs. Famous as one of the best hot springs towns of the Lake Biwa area, a visit allows you to enjoy beautiful skin, beautiful food and a beautiful view.

At the Ogoto City Ogoto Onsen Sightseeing Park, you can enjoy foot baths, souvenirs and cafes and more.



<http://www.ogotoonsen.com/>



Omi Ogoto Herb Garden 近江おごと ハーブガーデン

A herb garden for research run by the Japan Herbal Research and Development Organization. You can take a stroll through the garden while listening to explanations about the herbs, and experience various workshops.



The explanation from the staff is very interesting

☎ 077-572-8880
📍 2-18-1 Ogoto, Otsu City
🕒 Apr.-Nov. 10:00-16:00 (Reservation in advance is required)
🕒 Dec.-Mar. (Closed in the winter)
🎫 Admission: visit course from ¥1000
❌ Not accepted. <http://ogotoherbgarden.com/>

cafe & gallery Kimassi cafe&gallery キマッシ



A "kominka" old fashioned house cafe where you can spend relaxing time while looking at rice terraces. You can also enjoy sweets and lunch that change every month. Also offers a retail space selling retro furniture and goods, in addition to a rental gallery.

☎ 080-5318-5073 📍 2-34-12 Ogi, Otsu City

🕒 12:00-17:00 (Weekends, Mon. & Public Holidays) Check the calendar of opening days on the homepage. Lunch/12:00-14:00 (Reservations essential. Limit of 10 servings) Note: Reservations accepted up to 16:00 the day before. (Call to enquire about same day bookings) Cafe&Furniture/Goods/14:00-17:00

🕒 Tue.-Fri. (except public holidays) 📄 Credit cards not accepted.
<http://kimassi.wix.com/kimassi>

Terraced rice fields in Ogi 仰木の棚田

The Ogi area is home to an expanse of beautiful rice terraces that have been used for more than 1200 years. The rice terraces benefit from the spring water flowing from Mt. Hiei, and beneath them lies Lake Biwa, which catches the water. It is a recommended photogenic spot where you can enjoy stunning scenery.

Wasaina Ogi (Ogi District Revitalization Committee) わさいな〜仰木 (仰木地区活性化委員会)

A local organization that works to share the appeal of the Ogoto area. There is a place to buy locally grown organic vegetables, and you can try vegetable snacks. If you'd like to learn all about the Ogi area, where the natural country hills of Japan's classic scenery remain, contact "Wasaina Ogi".



Wasaina Ogi's farmers market



☎ 077-573-0339
📍 4-2-25 Ogi, Otsu City
<https://www.wasaina-ogi.com/>

堅田周辺 Around Katata

The area of Katata was formed in ancient times as a result of sediment build up from three rivers flowing from Mt. Hiei. Making the most of the blessings of Lake Biwa, locals have rich lives.



Townscape of Katata 堅田のまちなみ

This town, located in a perfect area where Lake Biwa is at its narrowest, developed with profits from water transportation and fishing. The locals, known as the "Kozoku" (lake people), formed the biggest self-governed town on the banks of the lake. Still today, mansions that used to belong to wealthy merchants and powerful clans remain.

☎ 077-572-0425 (Katata Tourist Information Center)
📍 Honkatata/Imakatata/Katata, Otsu City
<http://katatakankokyokai.com/>



Ukimi-do Hall 浮御堂

Ukimi-do Hall is a Buddhist temple of Kaimonsan Mangetsu-ji Temple, the grounds of which extend onto the banks of the lake. It was built around 1000 years ago in order to ensure the salvation of living things and the safety of the lake.

☎ 077-572-0455
📍 1-16-18 Honkatata, Otsu City
🕒 8:00-17:00
🎫 Admission: ¥300 📄 Credit cards not accepted.
<http://www.otsu.or.jp/spot/archives/159>



Dekejima Lighthouse 出島灯台

The lakeside area of Katata is home to many reefs, and this has historically caused ship accidents. In response to this, a wooden lighthouse was built in 1875 - the only one in the prefecture. The current lighthouse is the result of preservation efforts in 1973.

☎ 077-572-0425 (Katata Tourist Information Center)
📍 1 Imakatata, Otsu City
<https://www.biwako-visitors.jp/spot/detail/1452>

Culture and techniques that bloomed in the water town

~The story of the people who live with water~

The clear mountain streams that flow from Mt. Hiei, and into Lake Biwa. The people who live at the foot of the mountain enjoy the blessings of this water, and live lifestyles focused on life with water, by ensuring the waterways flow through the town, creating rice terraces on the slopes, developing medicinal hot springs etc., all with the majestic lake as the stage. Additionally, with this rich economy as the backdrop, a unique culture featuring beautiful temples and shrines, Japanese gardens and stonework, ship building and local delicacies blossomed. Visit the town of Otsu, where people continue to live with water and ancient techniques. You'll be sure to discover the traditions that blend into their lifestyle.



Hiyoshi Toshogu Shrine

日吉東照宮

Hiyoshi Toshogu Shrine - said to be built as a model of Nikko Toshogu Shrine. The main hall, that appears after a long set of stone steps, is decorated with fine carvings and rich colors.

The luxurious appearance is eye catching. The interior is worth seeing even more, so check the opening days prior to your visit.



Hiyoshi-taisha Shrine's Chief Priest, Takeshi Iguchi

- ☎ 077-578-0009 (Hiyoshi-taisha Shrine office)
- 📍 4-2-12 Sakamoto, Otsu City
- 🕒 Internal visit is possible only on Fri., Sat., Sun. and holidays 9:00-16:00. Visiting the grounds is possible at any time.
- 💰 ¥200 (¥150 for visitors who have visited Hi-yoshi-taisha Shrine)
- 💳 Credit cards not accepted.
- 🌐 <http://hiyoshitaisha.jp/toushougu/>



Former Chikurin-in

旧竹林院

In the town of Sakamoto, there remain over 50 "Satobo" traditional monks quarters that were inhabited by retired priests from Enryaku-ji Temple. One of them is the former Chikurin-in. The highlight is the garden that covers around 3,300m² on the grounds. The gardener's technique shines, making best use of the shape of the land. It is a nationally designated garden of scenic beauty.

- ☎ 077-578-0955
- 📍 5-2-13 Sakamoto, Otsu City
- 🕒 9:00-17:00 (Last admission: 16:30)
- 🗓 Mon. (open if a holiday), a day after a holiday, Dec. 26-31
- 💰 ¥320 (Adult), ¥160 (Child) 🚫 Not accepted.
- 🌐 <http://kyuchikuriin.web.fc2.com/>



Traditional Technique of Anoshu
14th generation stone artist
Junji Awata

Stonework by Anoshu

穴太衆の石積み

Most of the stone walls in Sakamoto were built by the Anoshu, a group of stonewall technicians. Their technique of skillfully putting together natural stones of different sizes is still used by their descendants today. Praised by the modern construction industry, the stonework is robust and beautiful.

- ☎ 077-578-6565 (Sakamoto Tourist Information Center)
- 📍 Sakamoto, Otsu City
- 🌐 <http://www.hiezansakamoto.jp/ws-anoisuzumi.html>



Minobe Onigawara Workshop

美濃邊鬼瓦工房

The Onigawara devil decoration placed on the roof as an amulet for the building is an essential part of traditional Japanese architecture. At the Minobe Onigawara Workshop, they are still creating Onigawara for important shrines and temples across the country, using traditional techniques.

- Left: Tetsuro Minobe
- ☎ 077-578-5333
- 📍 1-10-8 Hieitsuji, Otsu City
- 🕒 8:30-17:00
- 🗓 Sun, holidays, the end-of-year and New Year holidays
- 🌐 <http://minobe-onigawara.com/>



9th generation,
Masahiro Uenobu

Honke Tsuruki Soba

本家鶴嶽そば

A Soba restaurant in Sakamoto with 300 years of history. Using a traditional handmade technique, they continue to preserve the traditional flavor. Enjoy the flavor that has been loved for generations in the 130 year old shop that is registered as a tangible cultural asset.

- ☎ 077-578-0002
- 📍 4-11-40 Sakamoto, Otsu City
- 🕒 10:00-18:00 (L.O.17:30)
- 🗓 3rd Fri. and New Year's day (closed on 3rd Thu. & Fri. in Jan. & Jun., open every day in Aug. & Nov.)
- 🚫 Not accepted. 🌐 <http://www.tsurukisoba.com/>



Viewed from Lake Biwa, the shrine grounds and pine tree seem like a giant bonsai tree.

Pine tree of Karasaki-jinja Shrine (an auxiliary shrine of Hiyoshi-taisha Shrine)

日吉大社摂社・唐崎神社の松

The naturally beautiful grounds of Karasaki Shrine, which faces Lake Biwa, are home to a 200 year old pine tree. With a height of 10m and width of 30m, it stretches its branches over the shrine grounds. It is said that ages ago, a god descended onto the first generation tree and was then enshrined at Hiyoshi-taisha Shrine. Additionally, the second tree appeared in many Ukiyo-e prints as the symbol of the scenic "Night Rain of Karasaki". The current tree is the third generation, and thanks to the continued care of the gardeners, continues to grow by a few centimetres each year.



Hiroyuki Tsujii
Tsujii Landscaping Co., Ltd.

☎ 077-578-0009
(Hiyoshi-taisha Shrine office)
📍 1-7-1 Karasaki, Otsu City
🌐 <http://hiyoshitaisha.jp/karasaki/>



Center: CEO Kaoru Nakano

Mokube Shipyard Co., Ltd.

株式会社 壱兵衛造船所

Katata, a town that developed with water transport and fisheries, was also the center of ship building of the Lake Biwa area. With such history, it is still home to the Mokube Shipyard, that builds various sized ships for places all over Kansai. The massive dock is impressive.

☎ 077-572-2101
📍 1-2-20 Imakatata, Otsu City
🌐 <http://www.mokubezosen.jp/>

Matsui Shipyard

松井造船所

Lake Biwa used to be one of Japan's most important transport routes, and over 1000 "Maruko Ships" crossed its waters. "Maruko Ships" were traditional wooden sailboats that evolved independently in Lake Biwa. The Matsui Shipyard retains the historical manufacturing technology today.

☎ 077-572-0329
📍 1-1-32 Honkatata, Otsu City
🌐 <http://www.eonet.ne.jp/~matsuzousennsho/>



Right: Mitsuo Matsui

Kozoku no Sato Resource Center

湖族の郷資料館

The town museum of Katata, where you can learn about the history of Katata, the largest self-governed city on the banks of Lake Biwa, through various materials. You can sense the spirit of the people living by the lake over the waves of time.

☎ 077-574-1685
📍 1-21-27 Honkatata, Otsu City
🕒 10:00-16:00
📅 Wed., the end-of-year and New Year holidays
💰 ¥100 for an adult, free for a child
💳 Credit cards not accepted.
🌐 <http://kozokunosato.com/>



Shigekatsu Hachiken, a descendant of the "Kozoku" (lake people)



A refreshing breeze from the lake blows through the garden.

Isomeshi's Garden (Tennenzue-tei)

居初氏庭園 (天然図画亭)

The garden in the residence of the Isome Family, who were the head samurai of the self-governed city of Katata. From the tea room known as the "Tennenzue-tei", you can enjoy a view of the majestic Lake Biwa and the land on the other side. It is a unique scenic spot that makes the most of its lakeside location. A nationally designated place of scenic beauty.

☎ 077-572-0708
📍 2-12-5 Honkatata, Otsu City
🕒 9:00-16:30 (Reservation required)
💰 None scheduled. ¥5500
💳 Credit cards not accepted.
🌐 <https://www.shigabunka.net/archives/167archives/167>



Uotomi Shoten

魚富商店

Uotomi Shoten, a shop with over 80 years of history located in front of Mangetsu-ji Temple, famous for the Ukimido. Using fresh fish caught in Lake Biwa, the make "tsukudani" preserved fish without any preservatives or additives. They boast a traditional flavor that has been carried on for generations.



Nao Takebata,
4th generation
store manager

☎ 0120-105-292
📍 1-16-14 Honkatata, Otsu City
🕒 9:00-18:00
📅 Every Thu.
💳 Credit cards not accepted.
🌐 <http://biwa-uotomi.com/>



Naminooto Shuzo Co., Ltd

浪乃音酒造 株式会社

Naminooto Shuzo is a global sake brewery that even has a foothold in Spain. A must visit if you are going to bring back Katata sake as a souvenir. For a limited period at the Yokaro residence, you can enjoy sake and meals. (reservations essential)

☎ 077-573-0002
📍 1-7-16 Honkatata, Otsu City
🕒 10:00-17:00
📅 Sat., Sun. and holidays
💳 Credit cards not accepted.
🌐 <http://www.naminooto.jp/>



Omi mitarashi dumplings Omi Kagiya

近江のみたらし団子
近江かぎや

Karasaki, known as the origin of Mitarashi Dango dumplings. At the teahouse just opposite Karasaki-jinja Shrine, you can try Mitarashi Dango made with a traditional method. The smoky aroma and subtle sweetness is delicious.

You'll be hooked by the simple deliciousness!
☎ 077-578-0277
📍 1-8-1 Karasaki, Otsu City
🕒 9:30-16:00
📅 Thu.
💰 3 sticks from ¥300
💳 Credit cards not accepted.

Recommendations from locals!

The what's great about Otsu

There are many more hidden gems in Sakamoto, Ogoto and Katata, towns that developed with Mt. Hiei. Locals introduce their favorite hidden spots! It'll surely make you like Otsu even more!



The cherry blossoms of Yakujuin (Taikozakura)

薬樹院の桜 (太閤桜)

Yakujuin burned down in a battle known as the Hieizan Yakiuchi, but was pardoned by Toyotomi Hideyoshi, and was restored here. The large cherry tree that stands in the garden is known as his tree due to his strong connections to the area, and it stunning in full bloom. The garden is not open to the public, but you can glimpse at its majestic appearance over the fence.

- 077-578-6565 (Sakamoto Tourist Information Center)
- 5-24-82 Sakamoto, Otsu City
- Early to mid Apr.
- Not allowed to enter

Shuho-an

拾穂庵

A tasteful traditional cafe that makes use of a house that belonged to the priest family of Hiyoshi-taisha Shrine. You can enjoy fresh boiled rice dishes. One of the most appealing points is the fact that you can enjoy a view of the garden from any room in the cafe. Listening to the trickle of water in the elegant garden relaxes your mind and brings back fond memories. Enjoy relaxing in what is like a hideout for adults. Additionally, Artist Yusetsu Komori's Otsu-style paintings are on display and can also be purchased, so be sure to take a look.



- 090-7093-3488
- 5-24-79 Sakamoto, Otsu City
- 11:00-16:30
- Thu (open if a holiday), irregularly closed on Tue. & Wed.
- Credit cards not accepted.



Kawadoko of Hiyoshi Sanso

日吉山荘の川床

Hiyoshi Sanso, located in the back of the Hiyoshi-taisha Nishihongu Shrine, is a small restaurant nestled by the Omiya River that flows from Mt. Hiei. In Summer, you can enjoy dining while looking at a waterfall known as Hiryu, on kawadoko, a terrace constructed over the river. It is cool even during the Summer, and enjoying sukiyaki in the middle of the nature is particularly recommended.

Advance reservations required.

- 077-578-0065
- 4244-4 Sakamoto Honmachi, Otsu City (Back of Hiyoshi-taisha Shrine)
- 12:00-17:00 Reservation required (Open until 21:00 with reservation)
- None scheduled

Hiroyuki Tsujii
Tsujii Landscaping Co., Ltd.



Slope of Matsunobanba

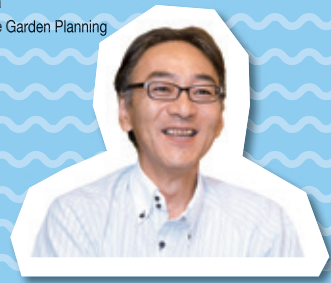
松ノ馬場の坂

The slope along Hiyoshi Toshogu and Mt. Hiei is a shortcut to a high school. Students dash up the hill to not be late to class. The top is about 100m high. A perfect way to test your physical fitness, a beautiful view of Lake Biwa rewards you if you can reach the top. The youthful slope is steep, but beautiful and fun.



Sakamoto, Otsu City

Masahiko Kosaka
Ogi Natural Culture Garden Planning
Hacchoji-gumi



Morimasa Kimura
Korando



Activities on the lake (Opal Optex Co., Ltd.)

湖上スポーツ (オーパルオブテックス株式会社)

My recommendation is the view from the lake! The town I live in, Katata, has a magnificent history stretching back over 1000 years, and is famous as featuring in Hiroshige Utagawa's Ukiyo-e prints. It is also great to visit historic spots by canoe or SUP.

Advance reservations required.



- 077-579-7111 (Opal Optex Co., Ltd.) 5-265-1 Ogoto, Otsu City
- Mar.-Nov. (Each experience is offered at different times, so be sure to check in advance)
- Wed. (Open daily from Jul. 20 to Aug. 31)
- <http://www.o-pal.com/>

Shigetaka Hachiken
Hachishige Kogyo Co., Ltd.



Ogoto Onsen "Lake Biwa Cruise" おごと温泉の「びわ湖 湖上お散歩クルーズ」



Viewing Otsu from Lake Biwa is a special experience. Enjoy the lake breeze from the deck of the ship! The cruise is full of fun, and you can even hop off and visit Katata, home to Ukimido!

📍 Hotels in Ogoto Onsen or Biwako Kisen Reservation Center
077-524-5000 (Toll-free: 0120-050-800)

📍 6 Ogoto, Otsu City (Ogoto Onsen Port)

📅 Weekends in Apr. 29-Nov. 19, 2017
Weekends in Mar. 11-25, 2018
Around 16:20-17:40 (Departs at 16:30)

📅 Weekdays 📄 Credit cards not accepted.

👤 Visitors staying at Ogoto Onsen hotels: ¥1,000 (Adult), ¥500 (Child)
General: ¥1,300 (Adult), ¥650 (Child)

🌐 http://www.ogotoonsen.com/event_top/osanpo

Okashidokoro Simaya's strawberry daifuku

「御菓子処 嶋屋」のいちご大福



In mid November, you can enjoy Shimaya's strawberry daifuku! These daifuku, made by wrapping a huge strawberry in Shiga smooth mochi with white bean paste, are loved by the locals for their subtle sweetness. There is no doubting their deliciousness, as they won the President's award at the 24th National Confectionary Expo.

📞 Main store (Manufacturing/Sales): 077-573-4620
Ukimido-mae branch (Cafe/Sales): 077-574-3791

📍 Main store (Manufacturing/Sales): 5-6-54 Honkatata, Otsu City
Ukimido-mae branch (Cafe/Sales): 1-21-22 Honkatata, Otsu City

📅 Main store (Manufacturing/Sales): 8:00-18:00
Ukimido-mae branch (Cafe/Sales): 9:30-17:00

📅 Main store (Manufacturing/Sales): Mon.
Ukimido-mae branch (Cafe/Sales): Tue.

📄 Credit cards not accepted. 🌐 <http://www.shimaya15.jp/>

Kokuhoden of Enryaku-ji Temple 延暦寺の国宝殿



Located to the left of the entrance to the east pagoda of Enryaku-ji Temple, this museum preserves and displays many cultural assets from Enryaku-ji, such as Buddha statues, images and documents. The sahasrabhuja arya avalokitesvara statue on the second floor is particularly famous. While small, it is beautiful and has warmth. You'll be moved every time you see it.

📞 077-578-0001 (Enryaku-ji Temple main phone number)

📍 Sakamoto Honmachi, Otsu City

📅 Mar.-Nov. 8:30-16:30

Dec. 9:00-16:00, Jan.-Feb. 9:00-16:30

📄 Open 365 days

👤 ¥500 (Adult), ¥300 (Junior high or high school student),
¥100 (Elementary school student) Note: Worshipping at
Enryaku-ji Temple requires an additional fee.

📄 Credit cards not accepted.

🌐 <http://www.heizan.or.jp/keida/kokuhoden>

View spots on the approach to Hiyoshi-taisha Shrine 日吉大社参道のビュースポット

If you walk slowly back down the approach to Hiyoshi Taisha, you can see moss covered stone walls on both sides. On the other side of the big torii gate ahead, you can see Lake Biwa. From this slope view spot, you can see the stoneworks, the torii gate and Lake Biwa all at once! In Autumn, the foliage looks beautiful, and the greenery looks wonderful in Spring and Summer as well! Hundreds of years ago, when the area was a busy shrine entrance town, people enjoyed the same view. It almost feels as if this scene is what connects the history of the town with the present.



📍 Sakamoto, Otsu City



Yuko Utsugi
Satoyu Mukashi-banashi
Yuzan-so



Kana Uenobu
Honke Tsuruki Soba



Nao Takebata
Uotomi Shoten

Izu-jinja Shrine's "Stone that calls for happiness"

伊豆神社の「幸福を呼ぶ石」

At Izu-jinja Shrine, there is a heart shaped holy rock that is said to bring you happiness if you rub it. Come and write your wish on a heart shaped "ema", and rub the stone to make your wishes come true! It will surely help with connections between people, jobs, romance etc.



📞 077-572-0425 (Katata Tourist Information Center)

📍 1-19-26 Honkatata, Otsu City

The waterways stretched through Sakamoto, and their clear water

坂本のまちに張りめぐらされた水路とその清流



I like the waterways that stretch through the town. Blessed water from Mt. Hiei cleanses the holy ground of the shrine, before passing through the priest's gardens, and nourishing the town before pouring into Lake Biwa. If you follow the flow, you'll see how well calculated the design is.

📍 Sakamoto, Otsu City

Seita Mori
YUtour



Event Information

1/1

Otobiraki Shinji at Hiyoshi-taisha Shrine 日吉大社 大戸開神事



A Shinto ritual involving opening the doors of the main hall and inner sanctum of Hiyoshi-taisha Shrine in order to release the power of the Gods. Additionally, in the dark before sunrise, a Shinto ritual performance is held under torchlight. In the past, there was a custom where people would share the flames and bring them back home for cooking.

☎ 077-578-0009 (Hiyoshi-taisha Shrine)
📍 5-1-1 Sakamoto, Otsu City
🌐 <http://hiyoshitaisha.jp/event/>

3/13

Hiei no Ogoma at Hieizan Enryaku-ji Temple 比叡山延暦寺 比叡の大護摩



A Buddhist service to pray for world peace and the fulfillment of wishes, held in front of the statue of the great Buddhist teacher that founded Mt. Hiei. Hundreds of thousands of wooden sticks with wishes written on them are burned along with the prayers of pilgrims. Potato dumplings, which are good luck charms, are offered for free in addition to "amazake" drinks.

☎ 077-578-0001
📍 Dengyo Daishi Sonzo-mae Hiroba, Saito Area, Sakamoto Honmachi, Otsu City
🌐 <http://www.hieizan.or.jp/>

4/12-14

Sanno-sai at Hiyoshi-taisha Shrine 日吉大社 山王祭



Known as a festival for the brave. Carrying a portable shrine in the dark, participants descend a steep slope with only torchlight to guide them. The sight of the shrines shaking strongly is breathtaking. At the final stage of the festival, the portable shrines cross Lake Biwa in a gorgeous spectacle.

☎ 077-578-0009
📍 5-1-1 Sakamoto, Otsu City
🌐 <http://hiyoshitaisha.jp/event/sannou/>

5/2-3

Ogi Dorota Festival at Ogura-jinja Shrine 小椋神社 仰木泥田祭



One of the town's annual festivals is the rain festival, where locals thank the deities of water and pray for rain. The sound of the Ogi Taiko Drum, designated as an intangible folk cultural asset of Otsu City, rings throughout, and portable shrine carrying and traditional horse running are held at this centuries old festival. At the end, the portable shrines are returned under torchlight.

☎ 077-572-1482
📍 4-38-55 Ogi, Otsu City
🌐 <http://ogurajinja.org/maturi.html>

7/28-29

Mitarashi Festival at Karasaki-jinja Shrine 唐崎神社 みたらし祭



A festival to help people purify their sins and impurities, and overcome the hot summer with a healthy body and mind. At the climax, handheld fireworks are set off on Lake Biwa. The sparks flowing like a waterfall from bamboo cylinders are brilliant and stirring.

☎ 077-578-0009
📍 1-7-1 Karasaki, Otsu City
🌐 <http://hiyoshitaisha.jp/event/mitarashi/>

8
1st Sun.

Kozoku Boat Race in Katata Kozoku Festival 堅田湖族まつり 湖族船競争



Descendants of the "Kozoku" (lake people) take part in a fierce boat race on Lake Biwa. An event of the "Katata Lake People Festival", participants work together to paddle their boats, to the encouragement of those watching at shore.

☎ 077-572-0425 (Katata Tourist Information Center)
📍 Honkatata, Otsu City (Offshore of Kamibe Nagisa Park/North of Ukimido)
🌐 <https://www.biwako-visitors.jp/event/detail/20097>

Access

Access by train



When using the JR lines from Osaka or Kyoto

Kyoto Sta. (Osaka Sta./ Shin-Osaka Sta.)

Via JR Kosei Line

Hielzan-Sakamoto Sta. — Ogotoonsen Sta. — Katata Sta.

When using the JR lines from Tokyo

[Transfer to JR Kosei Line]

Tokyo Sta. — Kyoto Sta. — Hielzan-Sakamoto Sta. — Ogotoonsen Sta. — Katata Sta.

When using the Keihan Railway Kyotsu Line from Kyoto

[Transfer to Kyotsu Line] [Transfer to Ishiyama-sakamoto Line]

Sanjo Sta. — Hamaotsu Sta. — Sakamoto Sta.

12/31

Onioi-shiki at Hieizan Enryaku-ji Temple 比叡山延暦寺 鬼追い式



A festival held on New Year's Eve in order to welcome in goodwill for the new year. Demons that represent human malice dance around a great fire, and a priest performs Buddhist teachings to reform them.

☎ 077-578-0001
📍 Ichigu Kaikan-mae Hiroba, Todo Area, Sakamoto Honmachi, Otsu City
🌐 <http://www.hieizan.or.jp/>

Access by car



Kyoto-higashi IC — Shigasato Ramp — Shimosakamoto Ramp — To various places

Leave the Meishin Expressway at the Kyoto Higashi IC and continue to the Nishi Otsu Bypass. Continue to each area from the Shiga Sato ramp or the Shimo Sakamoto ramp.

Information



Sakamoto Tourist Information Center

☎ 077-578-6565
📍 6-1-13 Sakamoto, Otsu City
🕒 9:00-17:00
📅 The end-of-year and New Year holidays

Otsu City Ogoto Onsen Kanko Park

☎ 077-578-3750
📍 1-2-17 Ogoto, Otsu City 🕒 8:00-18:00
📅 The end-of-year and New Year holidays
Note: Opening days and hours may be changed occasionally.

Katata Ekimae Tourist Information Center

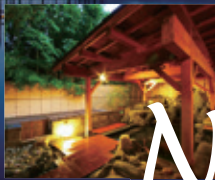
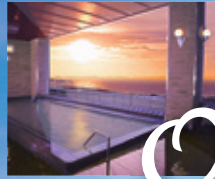
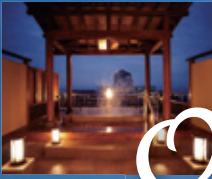
☎ 077-573-1000
📍 1-1-76 Mano, Otsu City
🕒 9:00-18:00

เพลิดเพลินได้ในเวลาเดียวกันทั้งทะเลสาบบิวะและออนเซ็น!

可同时享受琵琶湖及温泉之乐!

Hãy tận hưởng cùng một lúc hồ Biwa và suối nước nóng!

MAP P.42



雄琴温泉

Ogoto Onsen after bath walk

Ogoto Onsen

Lake Biwa

What's Ogoto Onsen?

ออนเซ็นมีชื่อซึ่งมีประวัติศาสตร์มานานถึง 1200 ปีก่อน จากการเปิดขึ้นเป็นออนเซ็นโดยพระในสมัยเอ็งคันซึ่งเป็นพระที่มีสมณศักดิ์สูงของโอเอซัง เมื่อครั้งในออนเซ็นมีพรตจะเขียนนุ่งตั้งที่ว่า "ออนเซ็นแห่งมิซึสาย" เป็นออนเซ็นซึ่งเป็นที่นิยมแพร่หลายอยู่ในขณะนั้น มาเพลิดเพลินกับการเดินทางท่องเที่ยวไปพร้อมๆกับออนเซ็นซึ่งได้จากคุณประโยชน์ของบิวกะโกะกันเถอะ!

雄琴温泉是比叡山的最登高僧于1200年前开设的历史悠久名汤。此处的温泉可滑润肌肤，至今依然是广受欢迎的“美肌之汤”温泉。欢迎在感受琵琶湖的恩泽及观光的同时，也一起享受温泉之乐!

Đây là suối nước nóng nổi tiếng có lịch sử hình thành cách đây 1200 năm bởi Saicho, một cao tăng trên núi Hiei. Suối nước nóng này hiện nay vẫn được yêu thích là "suối nước nóng cho làn da đẹp", vì khi tắm ở suối này làn da sẽ trở nên mịn màng!

Rent a bike in Ogoto Onsen Kanko Park!



สวนท่องเที่ยวที่มีออนเซ็นสำหรับเช่าฟรีและจำหน่ายของที่ระลึกยอดนิยมของโอโตะออนเซ็น และมีรถจักรยานสำหรับเช่า(300 เยน / 1 ชั่วโมง)ไว้บริการท่านอีกด้วย หากจะท่องเที่ยวรอบบิวกะโกะสึเก้ ก่อนอื่นขอเชิญท่านแวะมาที่นี่ได้เลย!

这里是可享受免费足汤及销售雄琴温泉人气伴手礼的观光公园。还有提供自行车(300日元/1小时)的出租服务，若要环游琵琶湖欢迎来到这里来!

Công viên tham quan có bồn ngâm chân miễn phí và bán quà đặc sản yêu thích của suối nước nóng Ogoto, v.v... Ở đây cũng có xe đạp cho thuê (300 yên/giờ), nếu bạn muốn tham quan xung quanh hồ Biwa thì hãy đến đây trước nhé!

おごと温泉 六角足湯 Ogoto Onsen Rokkaku Ashiyu

ออนเซ็นสำหรับแช่เท้าฟรีอยู่ติดกับสถานีรถไฟ JR โอโตะออนเซ็น เมื่อท่านเสร็จจากการท่องเที่ยวโอโตะออนเซ็นแล้ว ก่อนที่จะขึ้นรถไฟกลับ ขอเชิญท่านแวะมาผ่อนคลายความเมื่อยล้าของท่านที่นี่!

紧邻JR雄琴温泉站的免费足汤。可于雄琴温泉观光结束之际，在乘坐电车之前到这里消除双脚的疲劳!

Bồn ngâm chân miễn phí nằm ở ngay bên cạnh ga suối nước nóng JR Ogoto. Sau khi tham quan suối nước nóng Ogoto, hãy giải tỏa hoàn toàn sự mệt mỏi của đôi chân trước khi lên xe điện nhé!



浮御堂 Ukimido

มีชื่อเสียงในฐานะที่เป็นหนึ่งใน "โอมิซึคเคะ" ภูมิทัศน์ที่โดดเด่นเป็นตัวแทนของจังหวัด ในช่วงเวลากลางวันนั้นบนเนินที่ท่านจะได้ชมความงามของทัศนียภาพของอุคิมิโดริ และอุคิมิโดริบนผืนน้ำที่กระทบกับแสงอ่อนๆของอาทิตย์ยามเย็นส่องลงมาเป็นอย่างดี

以滋贺代表性景观的“近江八景”之一闻名。白天景色之美当然不在话下，落日时分浮现于薄暮中的身姿更是美丽无比。

Nơi đây nổi tiếng là một trong "8 cảnh quan của Omi", những cảnh quan tiêu biểu của Shiga. Hình ảnh nổi lên trong những buổi trưa hoặc trong ánh sáng mờ nhạt của buổi chiều tà trông thật đẹp.



Popular inn of Ogoto Onsen



Satoyu Mukashibanashi Yuzanso 里湯昔話 雄山荘 www.yuzanso.co.jp/english/

Dantoukan Kikunoya 暖灯館 きくのや <http://kikunoya.jp>



Lakeside Inn Ogotoso 湖畔の宿 雄琴荘 www.ogotoso.com

Yunoyado Komorebi 湯の宿 木もれび www.komolebi.jp/english/



Biwako Hanakaido びわ湖花街道 www.hanakaido.co.jp/en/

Biwako Grand Hotel & Kyo-ohmi 琵琶湖グランドホテル&京近江 www.biwakogh.co.jp



Yumotokan 湯元館 www.yumotokan.co.jp/world/english/

Biwako Ryokusuitei びわこ緑水亭 <http://ryokusuitei.com/en/>

Kotoyuu 天然源泉の宿 ことゆう <http://kotoyuu.jp>

Sightseeing Information: Ogoto Onsen Kanko Park ☎077-578-3750 www.ogotoonsen.com/english/

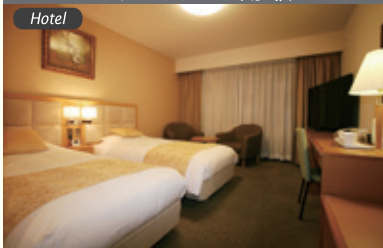
Lodging Information in Hikone

Overnight stay without
meals or including dinner!
Select freely according to
your itinerary!



HOTEL SUNROUTE HIKONE

ホテルサンルート彦根



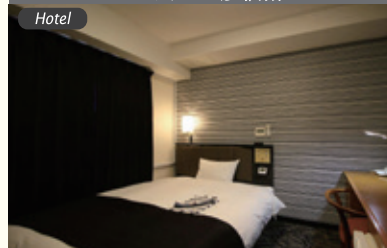
The nearest hotel from JR Hikone station. Hotel Sunroute Hikone can be accessed within 1 minute on foot from the station and therefore offers a very suitable location for business and leisure travellers alike. The whole building is equipped with a free WiFi-connection. Hikone Castle can be reached in 10 minutes on foot.



1 min. walk from JR Hikone Sta. west exit
TEL 0749-26-0123 FAX 0749-26-0686
ADD 9-14 Asahimachi, Hikone City, Shiga
¥ ¥6,000 (overnight stay without meals)-
CC A, D, J, M, V, 銀
<http://sunroute.net/>

APA HOTEL <HIKONE-MINAMI>

アパホテル<彦根南>



Always Pleasant Amenity
◆ Free internet access in all guest rooms (wired LAN and WiFi)
◆ Free welcome coffee
◆ Parking space (¥500 per day)



5 min. by car from JR Minami-hikone Sta. or 10 min. by car from JR Hikone Sta.
TEL 0749-22-5555 FAX 0749-23-0500
ADD 512 Hiratacho, Hikone City, Shiga
¥ Single ¥4,500- CC A, D, J, M, V, 銀
www.apahotel.com/hotel/kansai/01_hikone-minami/

HIKONE CASTLE RESORT&SPA

彦根キャッスル リゾート&スパ



Hikone Castle Resort & Spa is the nearest hotel to Hikone Castle. We offer luxury time with a relaxed atmosphere. Enjoy the panoramic view of the Castle from the guest rooms, public bath, terrace and the lounge. For dinner, you will experience a taste of ohmi Beef which is provided by Teppanyaki grill or an authentic Kaiseki cuisine.



8 min. walk from JR Hikone Sta. or a free shuttle bus service is available from JR Hikone Sta. west exit (prior reservations necessary)
TEL 0749-21-2001 FAX 0749-21-2200
ADD 1-8 Sawacho, Hikone City, Shiga
¥ 1 night with 2meals: ¥15,000- CC A, D, J, M, V
www.hch.jp

RYOUTEI RYOKAN YASUI

料亭旅館やす井



"Ryoutei Ryokan Yasui" is located in Hikone City in the Shiga Prefecture, where you can find Hikone Castle, which dates back 400 years in history and is listed as a National Treasure. Get an impression of the beauty and history of the castle tower, which makes the Edo Period live on and enjoy a wonderful stay by experiencing the omenashi spirit, which greatly values the taste of Japanese traditions and harmony. The Ryokan staff is looking forward to welcoming you.



8 min. by car from JR Hikone Sta.
TEL 0749-22-4670 FAX 0749-24-4141
ADD 13-26 Yasukiyocho, Hikone City, Shiga
¥ ¥29,700-53,460 (tax not included)
CC A, D, J, M, V, 銀
www.ryoutei-yasui.jp

HonMachi Juku

城下町彦根の町家 本町宿



HonMachi Juku, a machiya townhouse-style accommodation in the castle town of Hikone, is located in a renovated authentic Japanese house from the Edo Period. It is situated about 10 minutes on foot from Hikone Castle in an area where the 400-year-old Japanese townscape has been preserved. The Japanese style rooms are separated by sliding doors (Western rooms are available, too). While toilet and bath facilities are shared, this accommodation is located in a machiya townhouse which has preserved the charm of a castle town and offers the opportunity to get in contact with locals. For breakfast, guests can enjoy fresh local rice and vegetables. Free WiFi is available in all parts of the building.



10 min. walk from JR Hikone Sta.
TEL 0749-30-9932 FAX 0749-30-9936
ADD 3-3-55 Honmachi, Hikone City, Shiga
¥ ¥5,400-
CC Credit cards not accepted
<http://honmachi.hcdf.jp>

SHIGA MAPS

MAPS

42 **Otsu** North / Center / South

44 **Kusatsu** Central Part / Lakeside & Karasuma

45 **Koka** Konan / Shigaraki / Aburahi

46 **Hikone** Central Part / Toyosato to Inae

47 **Nagahama** Central Part / Kinomoto / Maibara

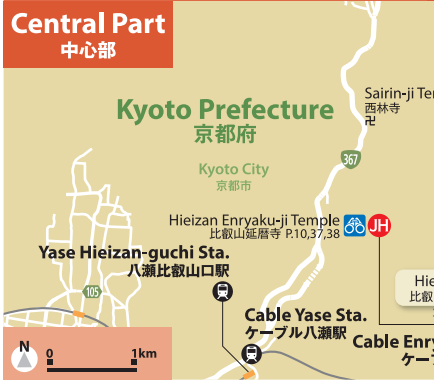
48 **Takashima** Makino & Nagahama / Omiimazu / Shin-asahi & Takashima

50 **Omiachiman** North of Omiachiman Sta. / Around Hachiman-bori

52 **Higashi-Omi** Notogawa & Gokasho / Yokaichi

Otsu

大津



North 北部



MOTHER LAKE BIWA in JAPAN

BIWAKO CRUISE

on the "MICHIGAN"

Biwako Kisen Co., Ltd. 5-1-1 Hamaotsu, Otsu City, Shiga
 For inquiries and reservations: Tel. +81-77-524-5000 (9:00-17:00)
www.biwakokisen.co.jp

Access to the Otsu Port:

- Take Keihan Train from Gion-Shijo Sta. to Keihan Hamaotsu Sta. (30min.)
- Take the Subway from Shijo Sta. to Keihan Hamaotsu Sta. (30min.)
- Take the Subway from Kyoto Shiyakusho-mae Sta. to Keihan Hamaotsu Sta. (25min.)

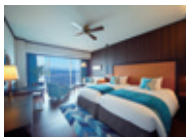
3min. on walk from Keihan Hamaotsu Sta.

Map showing the location of Otsu Port relative to Keihan Hamaotsu Station and surrounding areas. The map includes the Keihan Line, Keihin Keishin Line, and the Subway Tozai Line and Karasuma Line. Key locations like Sanjo, Gion-Shijo, and Kyoto-shiyakusyo-mae are marked.

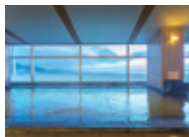


LAKE VIEW RESORT

Set your body and soul free at magnificent Lake Biwa
 讓壯麗的琵琶湖，解放您的身心靈
 웅대한 비와호에서 몸과 마음을 힐링하세요



Every guest room has a balcony and a lakeside view
 全部房間擁有湖景陽台
 모든 객실은 레이크뷰입니다



Natural hot spring bath with a view of Lake Biwa
 可眺望琵琶湖景的天然溫泉
 비와호를 한 눈에 바라볼 수 있는 천연온천 대탕



Restaurants featuring a wide variety of cuisines
 餐廳美味多種多樣
 레스토랑에서는 다채로운 메뉴를 준비하고 있습니다

- Free shuttle bus service!
JR Otsu Station ↔ Biwako Hotel
- 有免費接送巴士行駛!!
JR 大津站 ↔ 琵琶湖酒店
- 무료 셔틀버스 운행중!!
JR 오쓰역 ↔ 비와코 호텔
- Approx. 10 min. walk from JR Otsu Sta.
- Approx. 5 min. walk from Keihan Hamaotsu Sta.
- Approx. 5 min. by car from Meishin Expressway Otsu Interchange
- 從JR大津站步行約10分鐘
- 從JR 오쓰역에서 도보 약 10분
- 從京阪電鐵大津站步行約5分鐘
- 從京阪電鐵大津站步行約5分鐘
- 從名神大津交流道駕車約5分鐘
- 從名神大津交流道駕車約5分鐘



2-40 Hama-Machi, Otsu City 520-0041
 TEL: 077-524-7111 FAX: 077-524-1384

Kusatsu

草津



Lakeside & Karasuma

湖岸・烏丸



Central Part

中心部



It only takes 10 minutes by train to Kyoto Station from Otsu Station in Shiga!
In front of Kyoto Station! "KYOTO TOWER SANDO" opens in Kyoto Tower!
 京都车站前!“KYOTO TOWER SANDO”在京都塔盛大开幕! เปิดแล้ว! "KYOTO TOWER SANDO" ณ เกียวโตทาวเวอร์ หน้าสถานีเกียวโต!

Go on an eating tour of Kyoto
 京都逛逛吃吃 เดินเที่ยวหาของอร่อยขึ้นชื่อของเกียวโต

The gems of Kyoto are gathered here.
 京都逸品大集结 ศูนย์รวมสินค้ายอดเยี่ยมชื่อดังของเกียวโต

You can have many experiences
 各种体验等着您
 สัมผัสประสบการณ์ได้หลากหลายรูปแบบ

You can make fun memories while experiencing Japanese culture, through traditional sweets making, traditional crafts, sushi making etc.
 有制作和菓子、制作传统工艺品、以及握寿司体验等，在感受日本文化的同时也留下欢乐回忆。

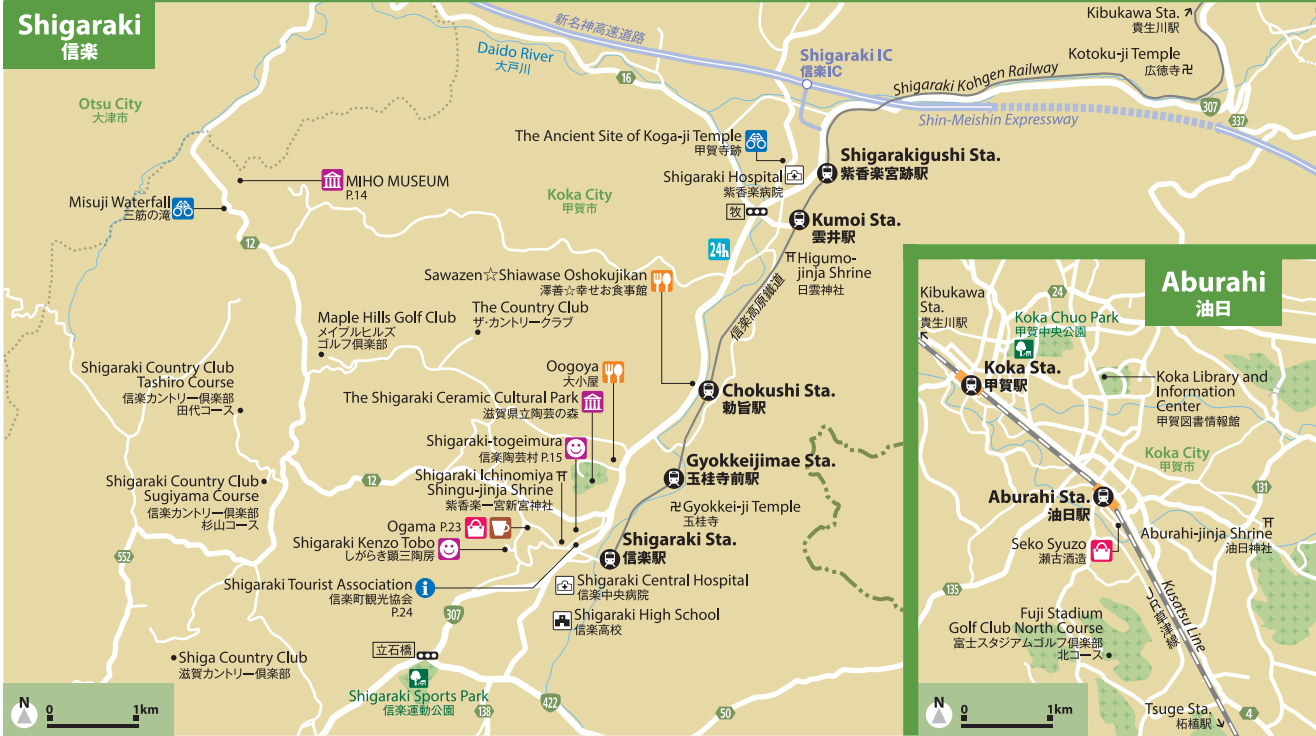
**เพื่อเพลิดเพลินกับการสัมผัสวัฒนธรรมของญี่ปุ่น
 จึงสร้างความทรงจำอันน่าประทับใจจากของทำ
 มือผ่านการสัมผัสประสบการณ์การทำขนม
 การทำผลิตภัณฑ์พื้นบ้านแบบดั้งเดิมและการ
 อื่นๆ**

◆Open 365 days ◆B1F: 11:00-23:00, 1F & 2F: 9:00-21:00 *Some stores may vary. ◆http://kyoto-tower-sando.jp/

KYOTO TOWER SANDO

Koka

甲賀・信楽



Fly with LCC × Stay at hotel **nikko** The nearest hotel to KIX Terminal2

Free shuttle bus / 7 minutes
無料連絡バス / 7分

Terminal2 第2ターミナル

Directly connected to the station
駅から徒歩すぐ

JR・NANKAI STATION

TEL:072-455-1111 <http://www.hotelnikkokansaiairport.com/>

ホテル日航関西空港 hotel nikko kansai airport

Hikone

彦根

Central Part 中心部



Wide Area 広域



Toyosato & Inae 豊郷・稲枝



Essential Information 1



Money 銭款 เงิน

You can withdraw money in Japanese yen using foreign-issued credit cards and cash cards at Seven Bank ATMs in 7-Eleven convenience stores and at Japan Post Bank's ATM. Major credit cards are accepted at many chain stores and shops. Currency can be exchanged and traveler's checks are accepted at hotels and banks.

在便利商店 7-11 內的 seven 銀行和郵貯 ATM，可使用國外信用卡或現金卡提取日幣。另外也有許多連鎖店等商家可使用各大信用卡。外幣或旅行支票可在飯店或銀行兌換。

ท่านสามารถถอนเงินเป็นสกุลเงินเยนญี่ปุ่นโดยใช้บัตรเครดิตและบัตรเงินสดจากต่างประเทศได้ที่เซเว่น แบงก์ ATM ซึ่งตั้งอยู่ในร้านสะดวกซื้อเซเว่น อีเลฟเว่นและที่ตู้ ATM ของธนาคารพาณิชย์ญี่ปุ่น บัตรเครดิตของยูนิโบริการหลักสามารถใช้งานได้ไม่ว่าสาขาและร้านค้าจำนวนมาก ท่านสามารถแลกเปลี่ยนสกุลเงินและสามารถที่จะซื้อตั๋วเครื่องบินได้ที่โรงแรมและธนาคาร



Japan Post Bank
郵便銀行 | ธนาคารไปรษณีย์ญี่ปุ่น
www.jp-bank.japanpost.jp/en/ias/en_ias_index.html



SEVEN BANK
Seven銀行 | ธนาคารเซเว่น
www.sevenbank.co.jp/intlcard/service2.html



Nagahama

長浜



Essential Information 2



Mobile Phones
 手機 โทรศัพท์มือถือ

Japan uses a different set of standards for mobile phone signal, so you won't be able to use your regular cell phone as is within Japan. You can either rent a cell phone that can be used within Japan at a rental counter in the airport or set up your own phone for roaming service (some mobile phone contracts may not allow roaming, so be sure to double-check yours in advance before attempting to use).

因日本手機的電波規格不同，自己的手機在日本國內無法使用。可在機場櫃檯租借日本國內專用手機或利用國際漫遊服務（請事先根據合約確認是否可利用國際漫遊服務）。
 ญี่ปุ่นใช้สัญญาณมือถือที่มีมาตรฐานแตกต่างออกไป ท่านจึงไม่สามารถใช้โทรศัพท์มือถือของท่านได้ที่ญี่ปุ่น ท่านสามารถเช่าโทรศัพท์มือถือที่สามารถใช้ในญี่ปุ่นได้ที่เคาน์เตอร์ให้เจ้าหน้าที่สนามบิน หรือติดตั้งโรมมิ่ง (สัญญาณโทรศัพท์มือถือบางเครื่องจะไม่สามารถใช้โรมมิ่งได้ โปรดตรวจสอบโทรศัพท์มือถือของท่านก่อนการใช้บริการโรมมิ่ง)

The main mobile phone rental firms

- NTT docomo international roaming center**
 0120-654100 *Closed from Wednesday to Friday.
www.nttdocomo.co.jp/english/service/world/smt/inroaming/
- JAL ABC**
 0120-086-072
www.jalabc.com/english/index3.html
- SoftBank Global Rental**
 03-3560-7730
www.softbank-rental.jp/e/

Takashima

高島

Makino & Nagahama マキノ・長浜



On public transportation

公共交通施設内 | โดยการคมนาคมขนส่งสาธารณะ



Don't talk on your cell phone!

請勿使用手機通話！
ห้ามคุยโทรศัพท์มือถือ



Let people off the train first!

請禮讓下車的乘客優先！
ให้ผู้ที่โดยสารอยู่ก่อน!



Stand in line!

請排隊！
เข้าแถวให้เรียบร้อยกันเถอะ!

Shin-asahi & Takashima 新旭・高島



- Takashima Village**
高島むねつし
- Rosokuchō Candle Workshop (Bldg.No.1)
瀬郷町キャンドル工房
 - cafe alivio (Bldg.No.8)
 - Central Bakery (Bldg.No.2)
セントラルベーカリー
 - Zero Gravity (Bldg.No.7)
ゼログラビティ
 - Umido (Bldg.No.3)
淡海堂
 - GRAND JETE (Bldg.No.5)
 - Ifu Dyeing Atelier (Bldg.No.4)
染色工房いふう
 - Takashima Wani Cafe (Bldg.No.6)
高島ワニカフェ



The charm of Japan to the world!

Good Luck Trip is a regularly published free magazine that promotes the charm of Japan through features as well as maps. The latest issue as well as back numbers are available on the Android- and iOS-compatible app.

地球の歩き方

Good Luck Trip

Contact japan@arukikata.co.jp

>Welcome to Japan!

Free app for smartphones and tablets!

www.goodlucktrip.co.jp

Restaurant
 Museum
 Amusement Park
 Experience
 View Spot
 Hot Spring
 Roadside Station
 Rental Bicycle
 Japan Heritage

Omihachiman

近江八幡



Try Using the app version of this magazine! 請嘗試使用這本雜誌的App版本! **Free / 免費**

Introduction on Sightseeing Spots 旅遊資訊

Currency calculator 匯率計算功能

Trends in Japan 日本的流行資訊

Available Offline 離線瀏覽功能

GOOD LUCK TRIP JAPAN App

- Supported languages: Chinese (Traditional), Chinese (Simplified), English
- Supported OS: Android, iOS (As of January 2016)
- 對應語言: 中文繁體字, 中文簡體字, 英語
- 對應OS: Android, iOS
- 대용 언어: 중국어 번체자, 중국어 간체자, 영어
- 대용 OS: Android, iOS (2016년 1월 현재 한국어는 대응하고 있지 않습니다)

GOOD LUCK TRIP JAPAN

Around Hachiman-bori
八幡堀周辺



Good Luck Trip

地球の歩き方

"GOOD LUCK TRIP" is a free magazine issued by the "Globe-Trotter Travel Guidebook" for overseas visitors to Japan.

「GOOD LUCK TRIP」は日本旅遊指南書籍「地球歩き方」発行の外國旅客専用免費雜誌。

"GOOD LUCK TRIP" 是由「地球歩き方」編輯的「Globe-Trotter Travel Guidebook」系列中針對外國旅客所發行的免費雜誌。

The charm of Japan to the world!

Every issue we feature the latest information on popular tourist spots, gourmet foods and shopping, as well as detailed maps and transportation facility transfer guides. You can download the latest issue and back issues from the free app.

每期刊載人氣觀光景點、美食、購物的最新資訊、詳細地圖及大眾運輸工具轉乘指南。可從免費 APP 下載最新期或過去刊期的內容。

Free App for smartphones and tablets!

ในแต่ละฉบับเรามุ่งเสนอข้อมูลล่าสุดเกี่ยวกับแหล่งท่องเที่ยวยอดนิยม, อาหารอร่อย และข้อป้บ่ง รวมถึงแผนที่โดยละเอียดและแนะนำเกี่ยวกับบริการคมนาคมขนส่ง ผ่านสามารถดาวน์โหลดที่ฉบับล่าสุดของฉบับย้อนหลังได้จากที่แอปพลิเคชัน

www.goodlucktrip.jp

We also update information every day on Facebook!

Facebook 的訊息也每天更新中!

www.goodlucktrip.jp

Contact japan@arukikata.co.jp

Higashi-Omi

東近江



EMERGENCY | 緊急連絡 | กรณีฉุกเฉิน

If you lose your credit card

! 遺失信用卡
หากท่านทำบัตรเครดิตหาย

Credit card companies

- American Express 0120-020-120
- Diners Club 0120-074-024
- JCB 0120-794-082
- MasterCard 00531-11-3886
- Visa Card 010-1-303-967-1090
- UnionPay 0034-800-800-287

If you lose your airline ticket

! 遺失機票
หากท่านทำตั๋วเครื่องบินหาย

Airline companies

- Air China 057-009-5583
- All Nippon Airways 0570-029-333
- Asiana Airline 06-6282-1880
- Cathay Pacific Airways 03-6746-1000
- China Airlines 03-6378-8855
- Eva Air 06-6377-3011
- Japan Airlines 0570-025-031
- Korean Air 06-6264-3311
- Peach Aviation 03-6302-8991
- Thai Airways International 0570-064-015

Emergency contacts

! 各種緊急聯絡處
เบอร์ติดต่อฉุกเฉิน

Emergency contacts

- Police 110
- Fire fighting and emergency 119
- Japan Helpline 0570-000-911

Embassies

- 中國大使館 03-3403-3388
- 3-4-33 Motoazabu, Minato-ku, Tokyo
- 中國駐大阪總領事館 06-6445-9481
- 3-9-2 Utsubohommachi, Nishi-ku, Osaka

台北經濟文化辦事處
03-3280-7811
5-20-2 Shirokanedai, Minato-ku, Tokyo

台北駐大阪經濟文化辦事處
06-6443-8481
Nichiei Bld. 4F, 1-4-8 Tosabori, Nishi-ku, Osaka

สถานเอกอัครราชทูต ณ กรุงโตเกียว
03-5789-2433
5-20-2 Shirokanedai, Minato-ku, Tokyo

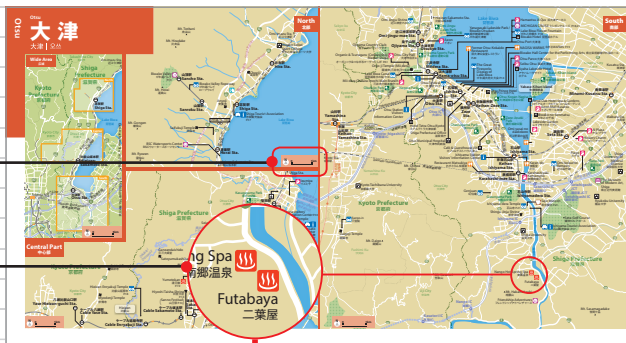
สถานกงสุลใหญ่ ณ นครโอซาก้า
06-6262-9226, 06-6262-9227
4F, Bangkok Bank Bldg., 1-9-16 Kyutaro-machi, Chuo-ku, Osaka City

How to use the maps

Use the maps and have even more fun in Shiga!

How to use the maps

- 1 Displays the map scale. Please be aware that the scale may change slightly from map to map.
- 2 Icons are used to indicate the genre of the spots they mark. Refer to the description given below for more on icons.



How to use the icons

GOOD LUCK TRIP SHIGA uses mainly three different basic icons to mark landmarks, amusement facilities, transportations, etc. Read the more detailed descriptions provided to find places you want to visit!

1 Landmark icons

Find your way around using cafés and convenience stores.



Convenience Store



Café

Open 24 hours so you can buy batteries, a toothbrush or whatever else you might need during your trip. The icon on the right indicates a convenience store with an ATM.

Stop at a café when you get tired. You can open your map and check your route.

2 Amusement icons

- | | |
|--------------------------|------------------|
| Electronics Retail Store | Experience |
| Drugstore | View Spot |
| Shopping | Hot Spring |
| Restaurant | Roadside Station |
| Museum | Rental Bicycle |
| Amusement Park | Japan Heritage |

3 Basic icons

- | | |
|------------------------------|--------------|
| Traffic Light / Intersection | School |
| Station | Park |
| Hotel | Airport |
| Tourist Information Office | Temple |
| Hospital | Shrine |
| Police Station | Route number |
| Koban (Police Box) | Route number |

Let's go to Mt. Hiei!

Garden Museum Hiei

ガーデンミュージアム比叡



A garden museum featuring a beautiful harmony of flowers and art. Visit and see Impressionist paintings reproduced on ceramic boards. (Closed from Dec. 4, 2017 to Apr. 20, 2018)

花卉及畫作調和得非常美麗的庭園美術館。以陶板重現印象派畫家們的繪畫。(2017年12月4日~2018年4月20日休園)

Eizan Cable/Ropeway

叡山ケーブル・ロープウェイ



Take the cable car and the ropeway to reach the top of Mount Hiei in just 15 minutes (minimum). The elevation difference of 561 meters is the largest in Japan. (No operation from Dec. 11, 2017 to mid-Mar., 2018)

轉乘纜索鐵路及空中纜車，最短15分鐘抵達比叡山頂。高低差561m的日本之最。(2017年12月11日~2018年3月中旬停駛)

Mt. Hiei Shuttle Bus

比叡山內シャトルバス



The shuttle bus service connects the various areas within Hieizan. (No operation from Dec. 11, 2017 to Mar. 20, 2018)

連結比叡山內各區域的巴士。(2017年12月11日~2018年3月20日停駛)

Keihan Railway Otsu Line (Keishin Line/Ishiyama Sakamoto Line)

京阪電車 大津線(京津線・山坂本線)



In some places the Keihan Railway's Otsu Line runs on road surfaces, and it is well known for its train cars covered in various wrap advertising going back and forth.

京阪電車大津線，有一部分的路段行駛在路面上，各種設計外觀的電車交錯往來極為有名。



暢遊比叡山!



What's Lake Biwa? 琵琶湖是什麼呢?



Located in Shiga Prefecture, Lake Biwa proudly holds the position of Japan's largest lake in terms of surface area and water volume.

琵琶湖位於滋賀縣，是日本面積及蓄水量最大的湖泊。

Shiga
滋賀



Sakamoto Cable Car

坂本ケーブル



Connecting Sakamoto, the town of stone masonry, and Enryakuji is Japan's longest cable car route which runs a distance of 2,025 meters.

全長2,025m的日本最長纜索鐵路，連結砌石城鎮的坂本與延曆寺。

Pick up!

Paddlewheel Boat "Michigan" 外輪船「ミシガン」



One of Lake Biwa's treasures, this pleasure boat has been designed to replicate the paddlewheel boats that sail the Mississippi River in the U.S.

琵琶湖的代表性觀光船。仿造美國密西西比河的外輪船。

Money-saving tickets

超值車票

●Mt. Hiei Sightseeing Pass 比叡山觀光通行證

For a thorough visit around Mr. Hiei and Lake Biwa 從比叡山到琵琶湖，如欲經濟實惠地盡情遊覽就用這張車票！

【Sales period】 March 18 [Sat.] – December 3 [Sun.], 2017
【Price】 Adult: ¥3,300 Child: ¥1,600

【發售期間】2017年3月18日（星期六）～12月3日（星期日）
【發售金額】成人3,300日圓、兒童1,600日圓



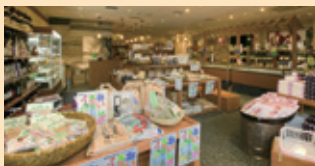
●Kyoto-chikatetsu / Keihan-otsusen 1-Day Ticket 京都地鐵・京阪大津線一日券

Unlimited rides for a day on the Keihan Otsu Line and Kyoto City Subway! 用這張車票一整天無限制乘坐京阪電車大津線和京都市營地鐵！

【Sales period】 April 1 [Sat.], 2017 – March 31 [Sat.], 2018
【Price】 Adult: ¥1,100 [For adults only]
【發售期間】2017年4月1日（星期六）～2018年3月31日（星期六）
【發售金額】成人1,100日圓（只有成人票）

For details: <http://www.keihan.co.jp/traffic/valueticket/global/en/>
詳情請參照：<http://www.keihan.co.jp/traffic/valueticket/global/tw/>

Hamaotsu A-Qus Umi no Eki 浜大津アークス 湖の駅



The store carries a diverse range of items, from the local specialties of Ohmi, Shiga, to knickknacks.

滋賀及近江名產、雜貨，商品陣容豐富多彩應有盡有。

Biwako Hotel

琵琶湖ホテル



Each room has a lakeside view and a veranda. This modern lakeside resort hotel also offers a natural hot spring bath.

全部客房擁有面湖景觀及陽台。還備有天然溫泉大浴場的湖邊時尚度假酒店。

Privileges

優惠內容

①Biwako Hotel 琵琶湖ホテル

5% OFF hotel restaurants (excluding the bar, cafe, and rooftop barbeque) Valid until March 31, 2018(exception: Dec. 31, 2017-Jan. 3, 2018)

館內餐廳用餐享95折（酒吧、咖啡店、頂樓BBQ除外），至2018年3月31日止（但2017年12月31日～2018年1月3日除外）

②Garden Museum Hiei ガーデンミュージアム比叡

Adults ¥200 discount/Children ¥100 discount Valid until Oct. 31, 2018(exception: Nov. 20, 2017-Apr. 20, 2018)

成人優惠200日圓／孩童優惠100日圓，至2018年10月31日止（但2017年11月20日～2018年4月20日除外）

③Sakamoto Cable Car 坂本ケーブル

Get a Cable Car card at Cable Sakamoto Station! Through March 31, 2018 纜索鐵路坂本站有贈送纜車卡片！至2018年3月31日止

④Biwako Kisen 琵琶湖汽船

30% OFF the passage fare (maximum 5 people per group) Valid until the end of Nov., 2018 乘船費享7折（最多5名），至2018年11月底

⑤Eizan Cable/Ropeway 叡山ケーブル・ロープウェイ

Receive a complimentary set of postcards (at Cable Yase Station). Valid until Dec. 10, 2017(There is no operation in winter from Dec. 11, to mid-Mar., 2018)

贈送明信片組合（於纜索鐵路八瀬站發放），至2017年12月10日止（12月11日～2018年3月中旬為冬季停駛期間。）

近江大橋
Omi Bridge

至 米原
名古屋
To Maibara
To Nagoya

JR-WEST RAIL PASS



Kansai Area Pass

1-day	Purchasing abroad	¥2,200	2-day	Purchasing abroad	¥4,300
	Purchasing in Japan	¥2,300		Purchasing in Japan	¥4,500
3-day	Purchasing abroad	¥5,300	4-day	Purchasing abroad	¥6,300
	Purchasing in Japan	¥5,500		Purchasing in Japan	¥6,500

Kansai WIDE Area Pass

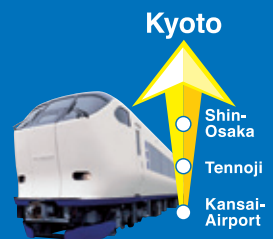
5-day Purchasing abroad **¥9,000** Purchasing in Japan **¥9,500**

There are also other value products. Please contact the travel agencies.

<https://www.westjr.co.jp/global/en/>

Direct access from Kyoto, Osaka(Umeda) to *Shiga* by Special Rapid Service!

**Direct access
from Kansai-Airport to *Kyoto*.
Ltd. Express "HARUKA"**



**Direct access
from Kansai-Airport to *Osaka (Umeda)*.
Kansai Airport Rapid Service**



JR-WEST RAIL PASS can be used on 'HARUKA' and 'Kansai Airport Rapid Service'!